



# LONG ISLAND

Is unique in every respect. Its natural beauties and perfect conditions are suited to all requirements. *Rest and Recreation, Sport and Pleasure, Agricultural and Industrial Pursuits*, and chief of all, *Healthy Homes* reached quickly and with comfort.

The train service is first-class in all branches. New coaches, new parlor cars and new hard-coal burning engines have been added to the Railroad's equipment this year. Dustless road-bed, ballasted and oil-sprinkled. Fast express trains bring every section of the Island within easy reach of Greater New York.

Baggage carried by the Long Island Express from Greater New York direct to all points on the Island, or if forwarded by Express, prompt delivery is insured; the necessity of checking, the annoyance incident to the care of the checks, and the employment of a local delivery, etc., is avoided.

This book of illustrations, reproduced from photographs, show some of Long Island's manifold phases, and is presented with the compliments of the

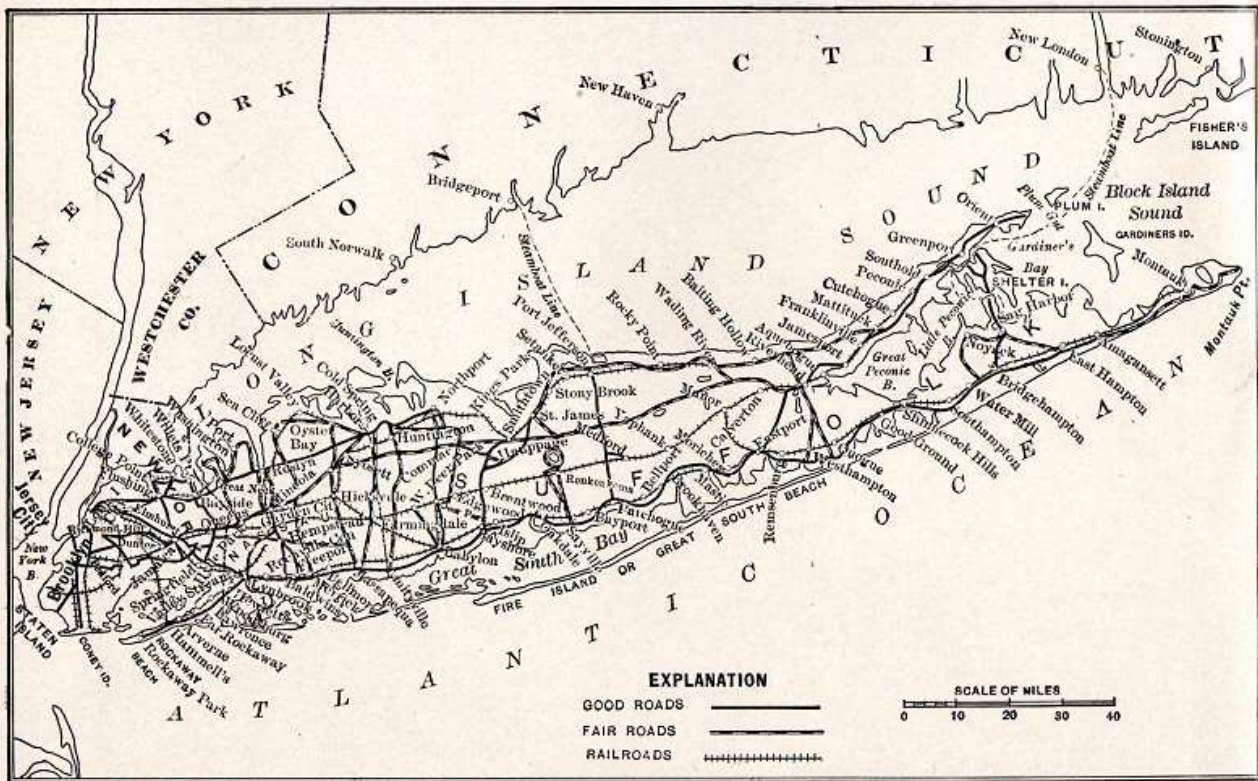
## LONG ISLAND RAILROAD COMPANY

in the belief that the "sun pictures" will describe better than words *Long Island's* many charms.

H. M. SMITH, TRAFFIC MANAGER

H. B. FULLERTON, SP'L AGT., PASS. DEPT.

OFFICES: LONG ISLAND CITY, N. Y.



**LONG ISLAND.**  
 IN CONTOUR IS "VERY LIKE A WHALE."

JOHN POLHEMUS PRINTING COMPANY, 121 FULTON ST., N. Y.



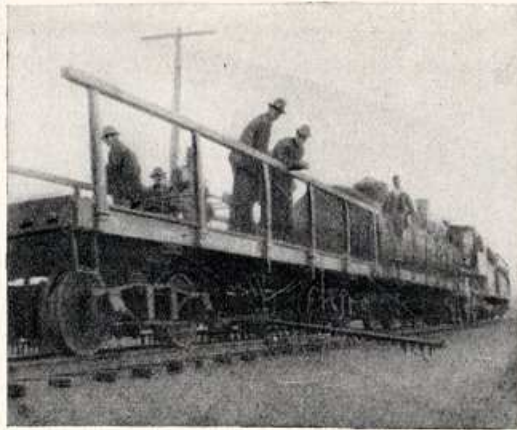
L. I. R. R. Depot,  
 Commissary and Quarter-  
 masters' Stores.



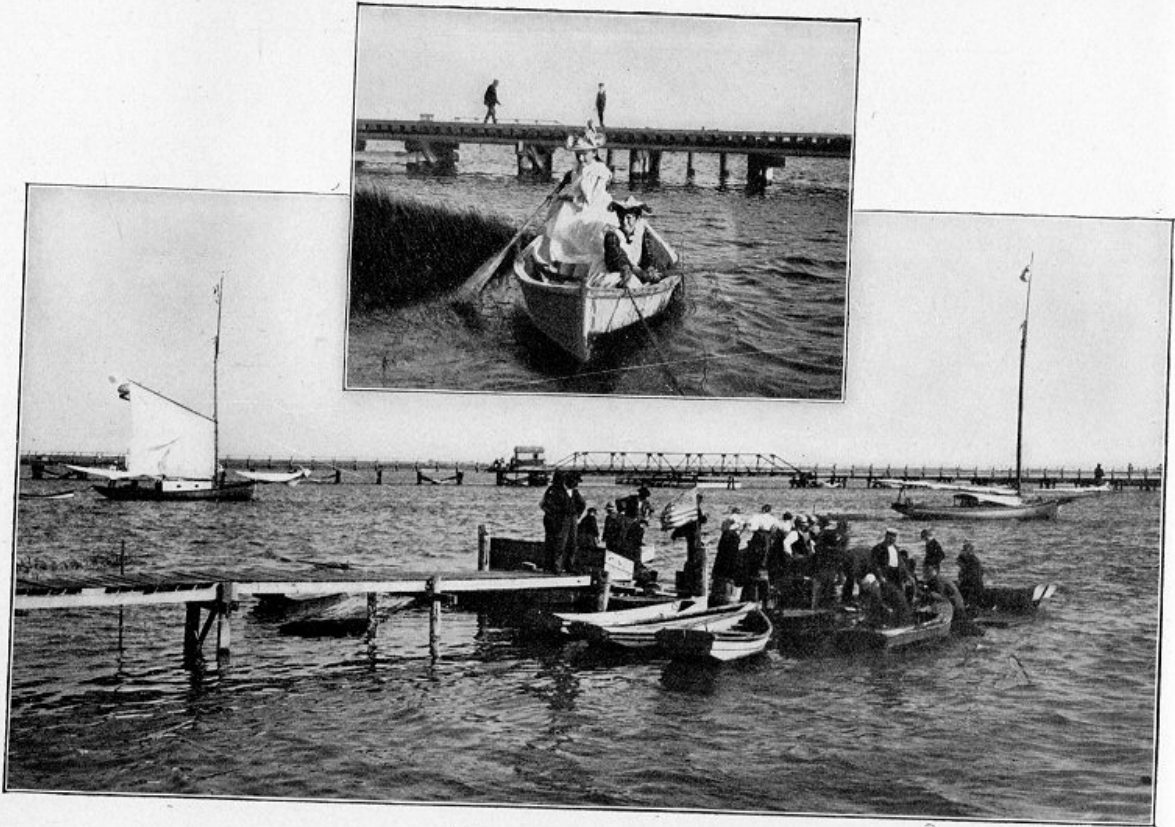
Observatory Hill Road and Ft. Pond Road  
 CAMP WIKOFF—MONTAUK, LONG ISLAND.



Wagon Camp—Depot—Stores—Ft. Pond Bay and Transports.  
CAMP WIKOFF—WEST FROM OBSERVATORY HILL.



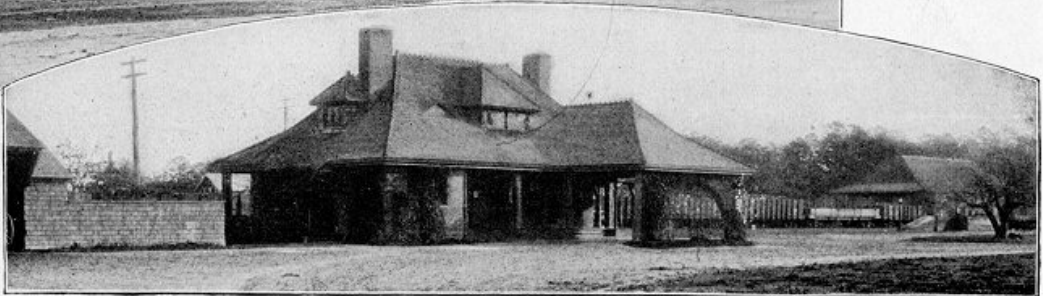
PETROLEUM DUST SUBDUER. Used on the Long Island Railroad System.



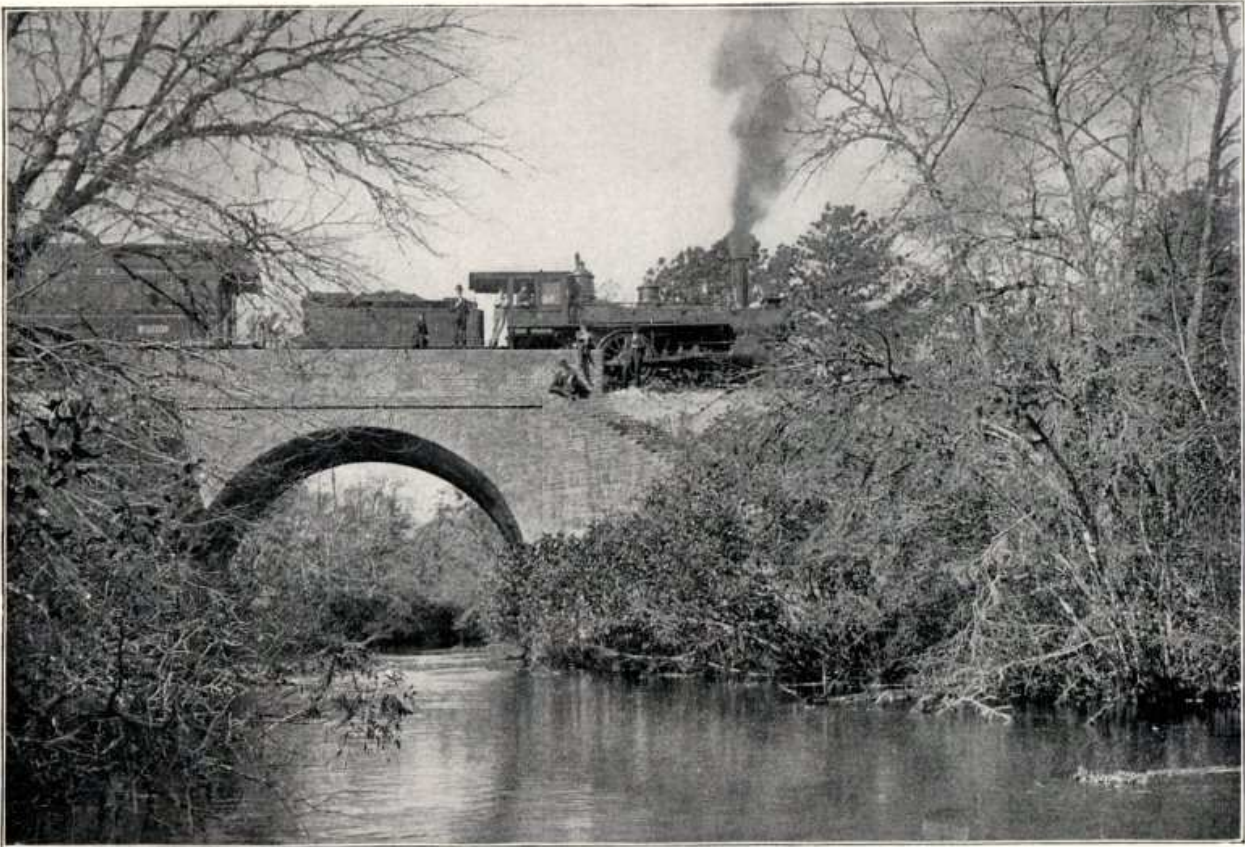
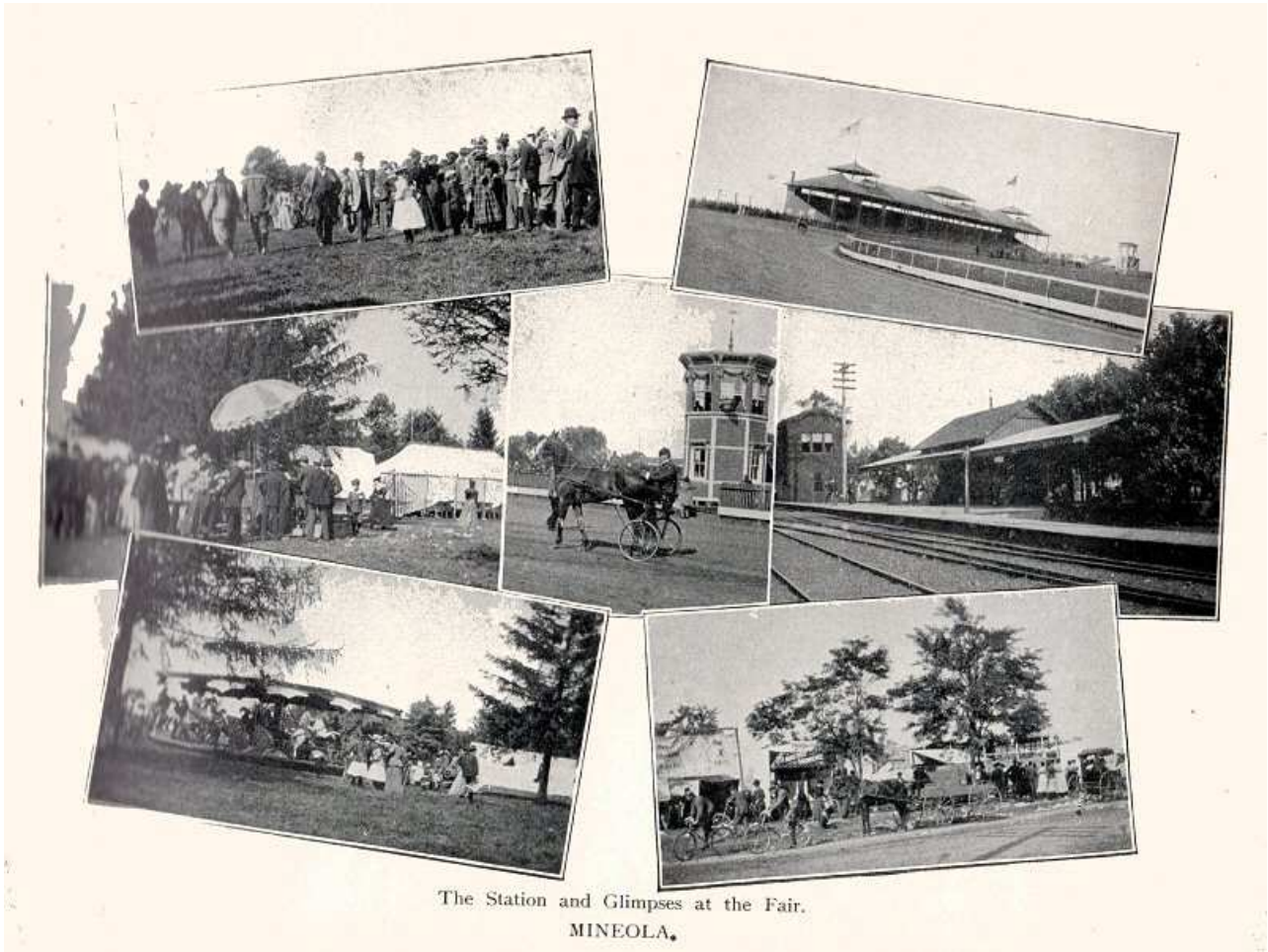
A Great Resort for Fishermen.  
A DAY'S OUTING AT WRECK-LEAD.



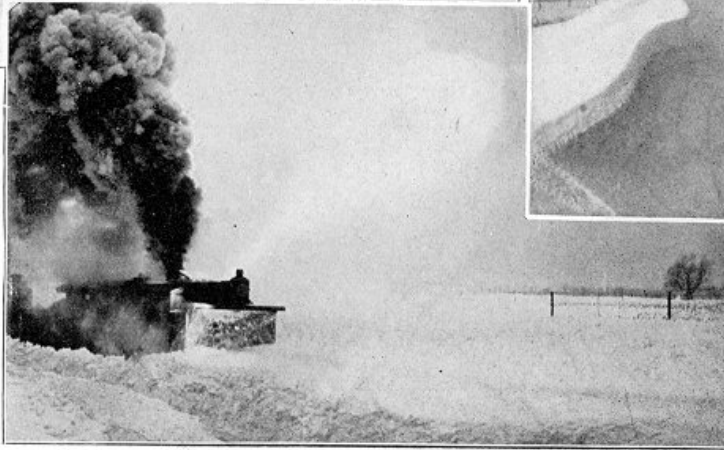
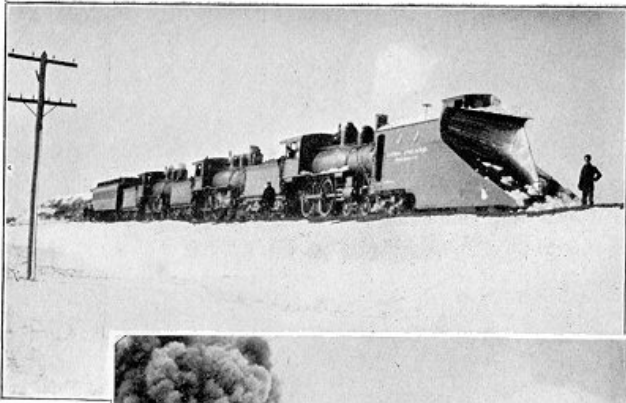
"Idle Hour" Lodge.



L. I. R. R. Station.  
OAKDALE—HALF A CENTURY.



Carmen River.  
YAPHANK.



Snow Fence Holds Back Drifts from Cuts.

The Wedge Plow Forces Snow Aside.

The Rotary Throws Snow into the Fields.

THE LONG ISLAND R. R. COMPANY FIGHTS SNOW BY MODERN METHODS.

