



- THE HISTORY
- THE SOCIETY
- PRESERVATION
- GAHS STORE
- HOME

- LIRR SERVICE to:**
- Van Iderstine Co.
 - Shaw-Walker Co.
 - Bickfords and Peter F. Mallon
 - Eagle Electric #7
 - Extrin
 - Roto-Broil
 - Walworth Craftsman, Westinghouse
 - Slicklen Paper
 - Sternberger
 - National Casket
 - Brenner Paper
 - Louis Sherry
 - Speed Queen
 - American Steel Wool
 - Web Offset
 - Astoria Lumber
 - West Chemical
 - Blissville Yard
 - Jacobson & Son
 - Stoll Metal
 - Marlyn Warehouse
 - Yard A
 - Dutch Kills Lift Bridge
 - Carbona Products
 - Centre Lumber
- Back to Transportation

HISTORY TOPICS: TRANSPORTATION: LIRR

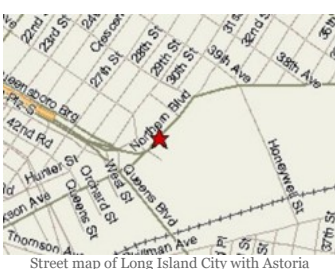


VOLUME 16: LONG ISLAND RAILROAD SERVICE TO LONG ISLAND CITY'S ASTORIA LUMBER

By Nicholas Kalis

Sixteenth in a series of glimpses into industries or warehouses that made for interesting freight operations on the Long Island. Information presented has included, where available, a brief history of the firm, how it was served by the LIRR, and what commodities were received or shipped from this facility.

Maps of Freight Stations and Private Sidings, June 1966, page 2 identifies Astoria Lumber, located in Long Island City, as Spot 15 facing the Long Island Railroad's Yard A. Astoria Lumber had its own siding, which branched off a track common to Web Offset (Spot 17) and Louis Sherry (Spot 17A), just off of the Stink Track. Old local telephone directories locate Astoria Lumber at 29-70 Northern Boulevard with telephone number ST 6 2770. This firm last appears in the 1973-74 telephone directory. The *Hyde Atlas*, Queens Vol. 1, updated through 1955, finds this building, then known as "Astoria Lumber Co." situated on a 73 foot-wide lot fronting Northern Boulevard. Astoria Lumber, a 2-story building with large industrial windows, may be constructed of corrugated steel or stucco. Astoria's roof may also be of corrugated steel. An aerial view in 1975 places three equally spaced vents along the roof peak, which roof appears dark. A Robert Emery map identifies a track passing alongside the "Astoria Lumber Co. Shed". Emery correctly places Astoria Lumber between Westinghouse Elec. Mfg. Co. (Spot 14) and National Casket (Spot 16). A track diagram Art Huneke sent me identifies the switch at Astoria Lumber as "VS2A", signifying Valuation Section Two, part or sub-section A.



Street map of Long Island City with Astoria Lumber location indicated by a red star. Credit: Yahoo!

Don't forget to model two ancillary buildings I assume are associated with the main peaked roof structure. First, the one-story shed (corrugated steel?) to the right (when facing Astoria Lumber from Yard A) with its peaked roof (See Photo 2). Also a must for modeling is the two-story add-on brick building to Astoria Lumber's left which a 1975 aerial photo shows to have a flat roof and be square in footprint. Can anyone tell us more about this brick building? Although our 1966 track map obscures this point, bear in mind two additional buildings visible from Yard A, though *not* served by the LIRR, separated Astoria Lumber from its western neighbor, Westinghouse (Spot 14).



Astoria Lumber (Spot 15) appears to the left of National Casket. (Spot 16) No date Credit: Bill Myers



Robert Wagner, Mayor of New York City during the period I am modeling. Credit: The LaGuardia and Wagner Archives, LaGuardia Community College/The City University of New York

Commodities shipped by rail into this peaked-roof facility probably included plywood and other lumber carried in box cars. These commodities would have originated in mills whose names I have yet to uncover located in states I have yet to research. Astoria Lumber likely shipped out nothing by the Long Island Railroad as only empties left this facility by rail.

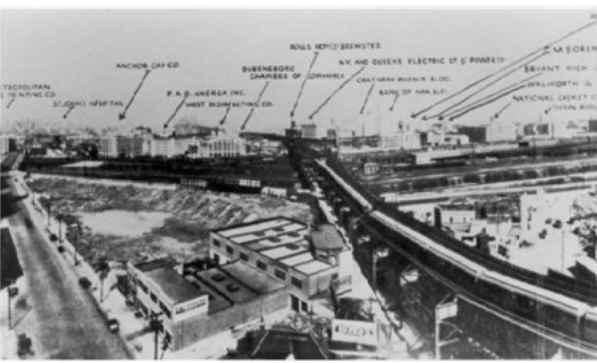
Can any reader venture to guess what was Astoria Lumber constructed of? What color would it have been in the early 1960s?

GAHS STORE

Books

Images

Merchandise



Astoria Lumber (Spot 15) should appear to the left of National Casket (Spot 16) Credit: The LaGuardia and Wagner Archives, LaGuardia Community College/The City University of New York

Modeling

Readers seeking to model Astoria Lumber would be well advised to simply scratch build it. I would suggest a foam core mockup be constructed first. I am still open to advice about parts to use to build this structure in HO scale.

Credits

Thanks to Art Huneke, Bob Miller, Carl Fabrizi, and Bill Myers

Bibliography

Author Unknown. *Maps of Freight Stations and Private Sidings* (Reprint) June 1966

http://www.astorialic.org/topics/industry/lirr/volume16/volume16_p.php

Go

NOV

DEC

JUL

2 captures






14 Dec 2007 - 25 Jul 2008

2006

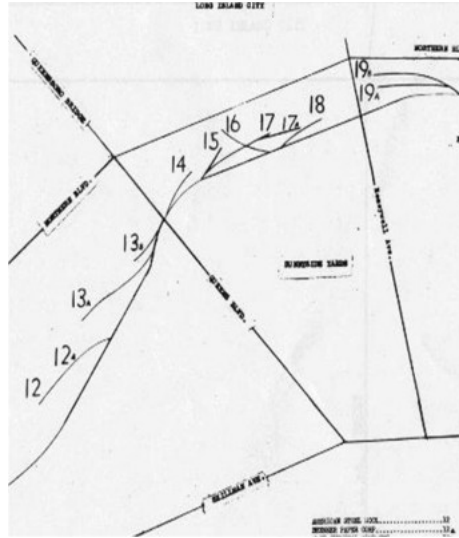
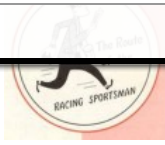
14

2007

2008

About this capture



Maps of Freight Stations and Private Sidings 1966 showing Astoria Lumber as Spot 15.

RELATED PAGES

Website : [LIRR Freight Stations and Private Sidings](#)



Search

Search GAHS Website

Search WWW

[Home](#) | [About Us](#) | [Contact Us](#) | [About this Website](#)



Copyright 1999-2007
Greater Astoria
Historical Society