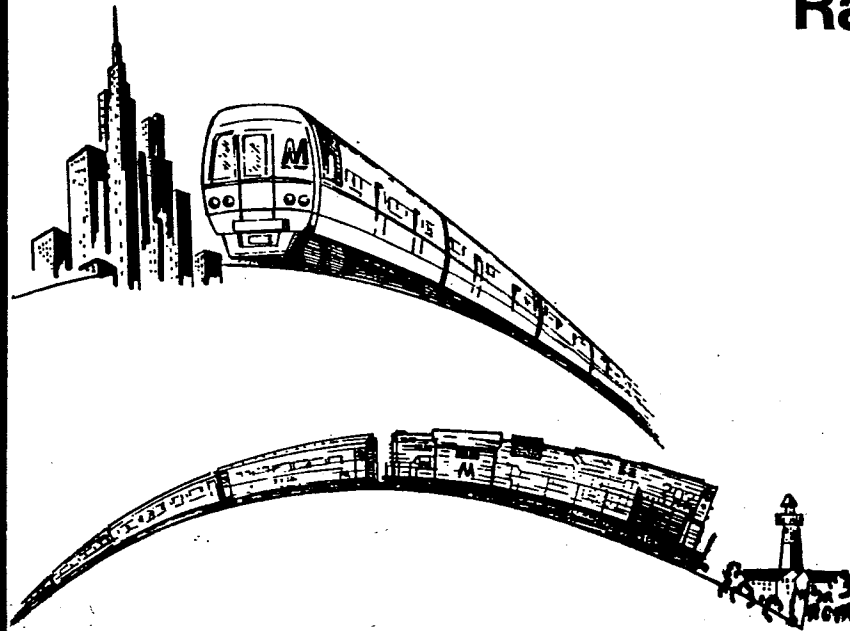


57

The Long Island
Rail Road



**EQUIPMENT
DIAGRAMS**

MAINTENANCE OF EQUIPMENT DEPARTMENT

REVISED 9-82

44
10/16/53
dt - Hugh [unclear] New York

TABLE OF CONTENTS (NUMERICALLY ARRANGED)

CAR NOS.	CLASS OF CAR	SHEET NO.
2000	BUSINESS CAR	1
2011 TO 2021	PP72B	2
2101, 2104	BG72B	3
2701 TO 2723 (ODD NOS. ONLY)	PT75	4
2705 (BAR CAR)	PT75	5
2701 TO 2736 (EVEN NOS. ONLY)	PT75A	6
2791, 2794, 2796, 2798	PT72C	7
2801 TO 2844	PT72A	8
2890, 2892, 2894 (BAR CARS)	PT72C	9
2901 TO 2980 (EXCEPT 2949 AND 2957)	P72	10
2990, 2991, 2992 (BAR CARS)	P72	11
9001 TO 9769 (ODD NOS. ONLY)	M-1	12
9002 TO 9770 (EVEN NOS. ONLY)	M-1	13
<hr/>		
100 TO 107	E-10	14
150 TO 172	E-15	15
222 TO 229	L-2	16
250 TO 277	E-20	17
398 AND 399	G5-1	18
600 TO 610	PC-6	19
611 TO 618	PC-6	20
619 TO 623	PC-7	21
C62 TO C70 (CABOOSES)	N-22B	22

PASSENGER CARS

LOCOMOTIVES

THE LONG ISLAND RAIL ROAD

INTERPRETATION OF PASSENGER CAR CLASSIFICATIONS

<u>PREFIX</u>	<u>DESCRIPTION OF CLASS</u>
P	- LOCOMOTIVE HAULED PASSENGER COACH OR PARLOR CAR.
PT	- LOCOMOTIVE HAULED PASSENGER COACH USED IN PUSH-PULL SERVICE AND REQUIRES AUXILIARY 600 VOLT POWER SUPPLY.
PP	- SAME AS <u>PT</u> CLASS EXCEPT IT IS A PARLOR CAR.
BG	- LOCOMOTIVE HAULED BAR-GENERATOR CAR USED WITH CLASS <u>PT</u> AND <u>PP</u> CARS. SUPPLIES 600 VOLT AUXILIARY POWER.
M	- ELECTRIC MULTIPLE UNIT PASSENGER CAR.

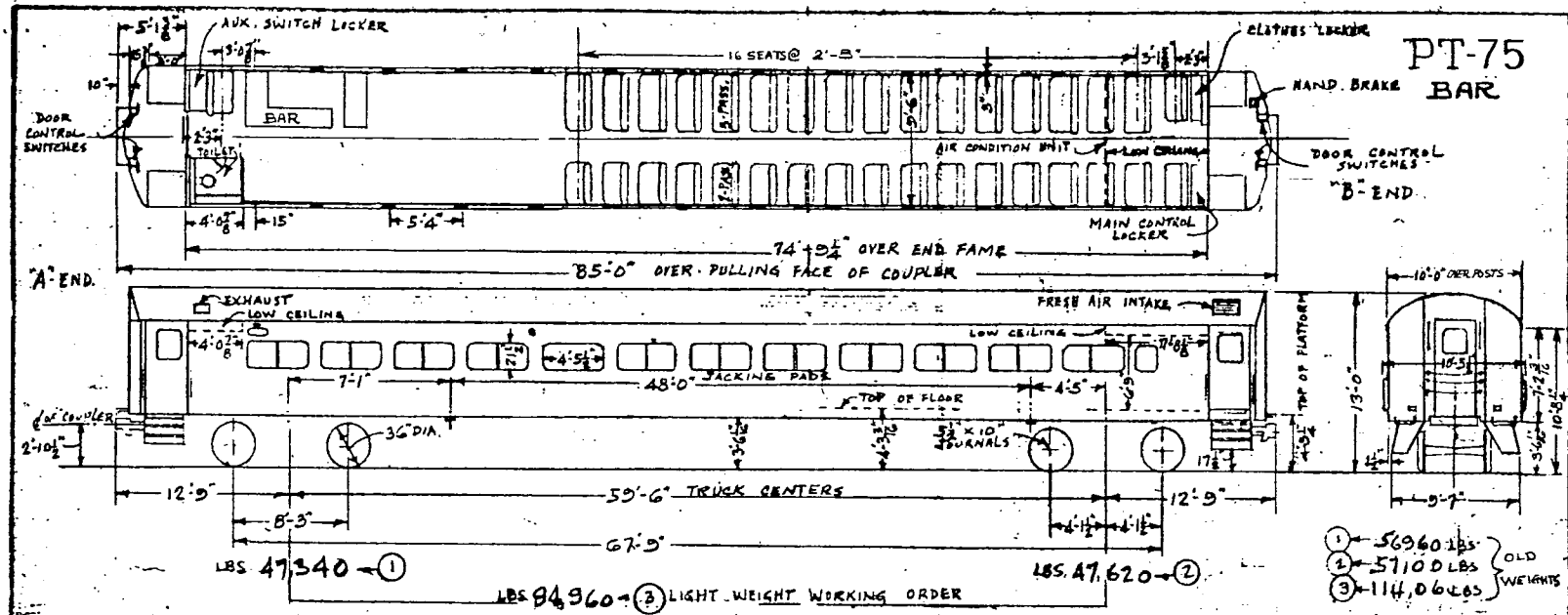
SUFFIX

M	- MULTIPLE UNIT
S	- STEAM
C	- AUTOMATIC SPEED CONTROL

INTERPRETATION OF LOCOMOTIVE CLASSIFICATIONS

PREFIX

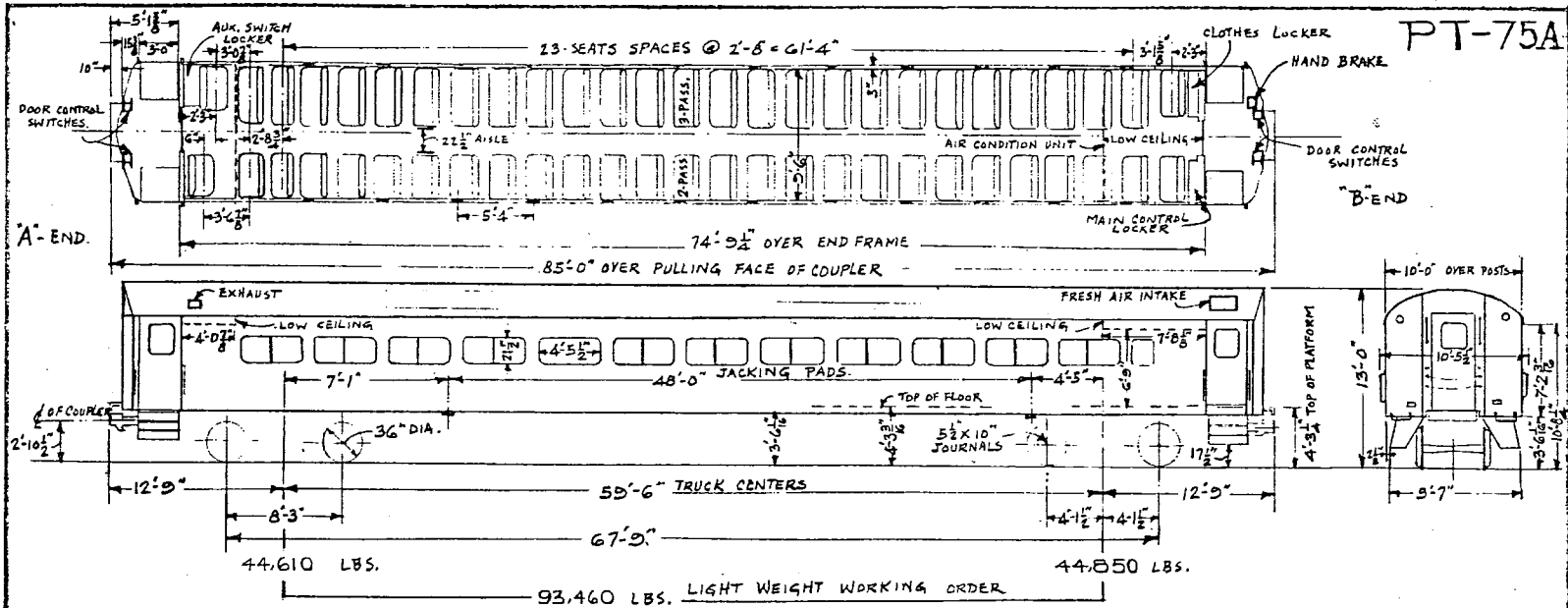
GP	- GENERAL PURPOSE
L	- LOCOMOTIVE
GS	- GENERAL ELECTRIC CO. (Switcher)
AS	- ALCO SWITCHER
AGP	- ALCO GENERAL PURPOSE
PC	- POWER CAR
E	- ELECTRO MOTIVE DIVISION - GEN. MOTORS CORP.



* OLD NO.	2526	2526	2527	2528	2529	2530	2531	2532	2533	2534	2535	2536
NEW NO.	2701	2703	2705	2707	2709	2711	2713	2715	2717	2719	2721	2723

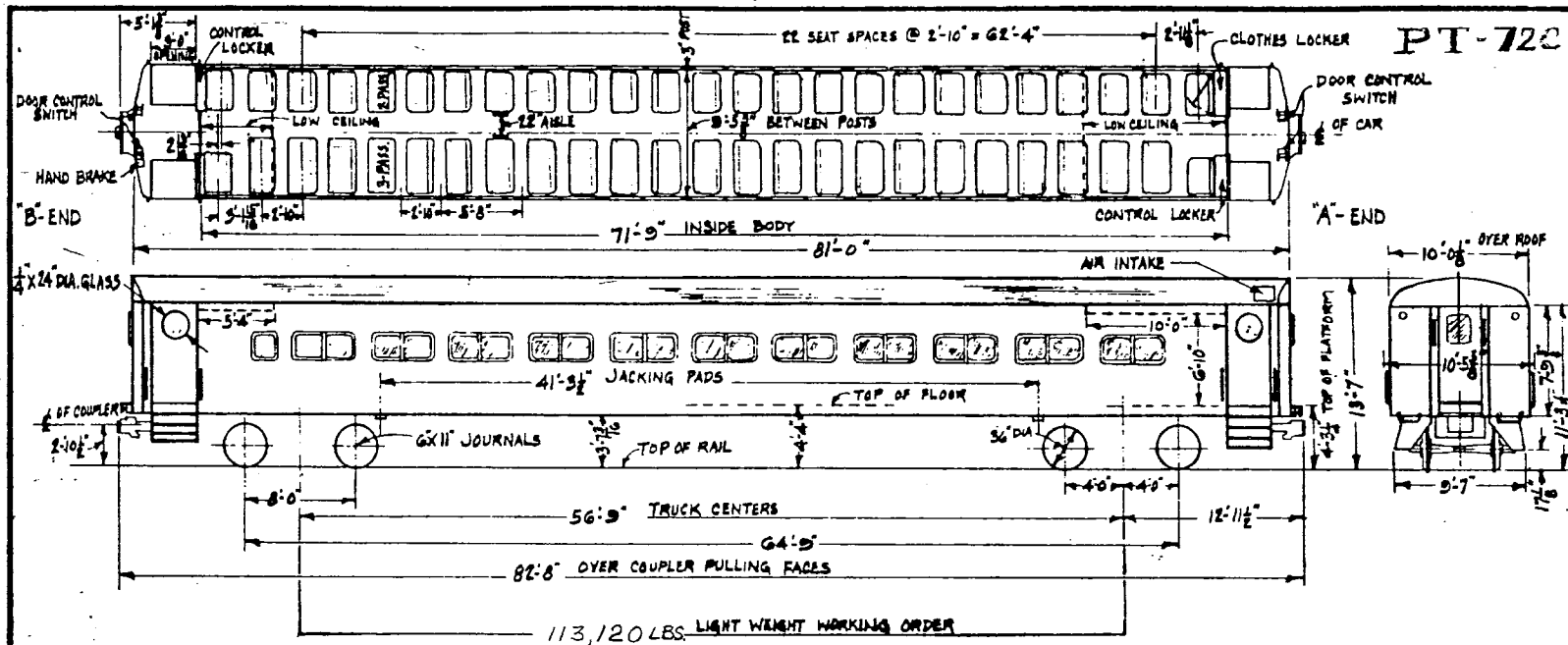
DATA		
TYPE OF CAR - Push-Pull BAR CLASS OF CAR - PT75 TYPE OF CONSTRUCTION - WELDED STEEL CAR NUMBERS - * 2705 SEATING CAP'Y - 86 MANUFACTURER - PULLMAN STANDARD CRIER NO - 7014-A YEAR BUILT - 1963 MIN. RAD. OF CURVE SINGLE CAR - 240 FT MIN. RAD. OF CURVE CAR COUPLED - 240 FT TYPE OF TRUCKS - CAST STEEL, BAR TYPE WEIGHT OF TRAILER TRUCK COMPLETE - MAKE, TYPE & SIZE OF BEARINGS - THYROR ROLLER 3 1/2" X 10"	NO & SIZE OF BRAKE CYLS. PER TRUCK - 4-5" DIA MAKE & SCHEDULE OF AIR BRAKES - WABCO 26 RE MAKE & TYPE TRK BRKE - WABCO, DNIT MAKE & TYPE OF HAND BRAKE - Peacock 800-L2-24 MAKE & TYPE OF COUPLER - ALF. HIC STL. INTERLOCKING MAKE & TYPE OF SASH - A&N 66 Lexan OUTSIDE FINISH - HIGH STRENGTH STEEL TYPE & THICKNESS OF INSULATION - GUSTIN BACON ULTEALITE - 3" TG MAKE & TYPE OF SEATS - HEYWOOD HICKERIDY SEAT COVERING - VINYL PLASTIC	MAKE & TYPE OF AIR COND. EQUIP'T. - SAFETY - 8 DOW MAKE & TYPE OF HEATING EQUIP'T. - VAPOR - ELEC. STEEL MAKE & TYPE OF A.C. & H.T.G. EQUIP'T. MAKE & TYPE OF LIGHT FIXTURES - TRANSLUCENT FLUORESCENT NO & TYPE OF VENTILATORS - SAFETY, 14 X 15 1/2 - 2-60 NO & TYPE OF WATER COOLERS - CAP'Y OF DRINKING WATER - CAP'Y OF WASH WATER TANK - NO OF TOILETS - 1 MAKE & TYPE OF LAVATORY - MICROPHOR MAKE & TYPE OF MG. SET - WEST, TX-503-A MAKE & TYPE OF M. ALTERNATOR - SAFETY-3223AM424 MAKE & TYPE OF U.C. POWER PLANT - FUEL TANK CAP'Y - MAKE & TYPE CAP'Y BATT. - 30AH, C 6NR NUMBER OF JUMPER RECEP'T. - 12 4 G DUMMY MAKE & TYPE OF LINE CW. - WEST UPE-53 MAKE & TYPE OF DOOR CONT'L - VAPOR - CRC CONVERTED TO PUSH PULL - 1973

PT-75A



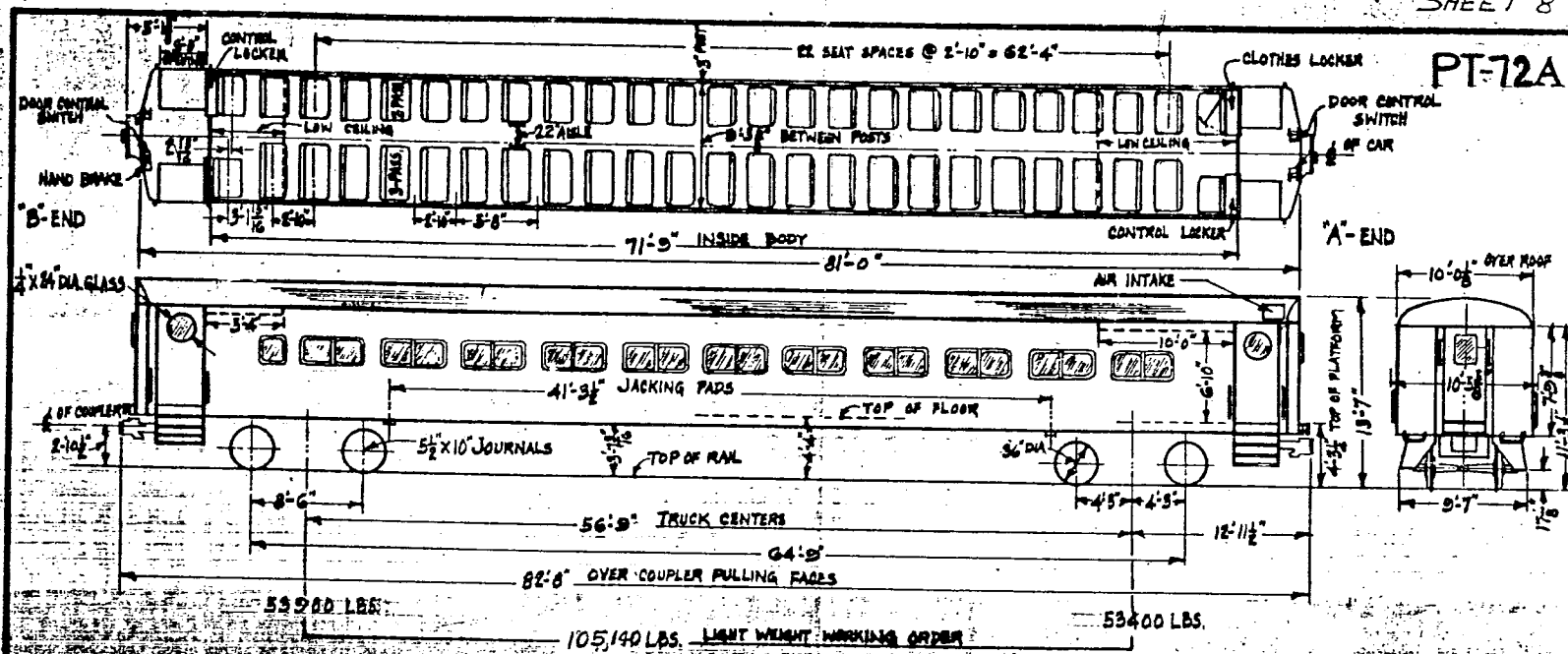
~ GENERAL DATA ~

TYPE OF CAR - PUSH-PULL	VOLT & CONT'L.P. OF MOTORS -	MAKE & TYPE OF AIR COND. UNIT - SAFETY 216	MAKE & TYPE OF MASTER CONT'L -
CLASS OF CAR - PT-75A	WEIGHT OF ONE MOTOR COMPLETE -	MAKE & TYPE OF HEATING EQUIPT -	MAKE & TYPE OF S.C. EQUIPT -
TYPE OF CONSTRUCTION - WELDED STEEL	NO. OF CONTACT SHOES PER TRUCK -	MAKE & TYPE OF A.C. & H.V.H.G. EQUIPT -	MAKE & TYPE OF HEADLIGHTS -
CAR NUMBERS - 2702-2736 EVEN Nos. ONLY	NO. & SIZE OF BRAKE CYLS. PER TRUCK - 4-5" DIA.	MAKE & TYPE OF LIGHT FIXTURES - FLUORESCENT	MAKE & TYPE OF MARKER LIGHTS -
SEATING CAP'Y - 133	MAKE & SCHEDULE OF AIR BRAKES - WABCO. 2G-CE	NO. & TYPE OF VENTILATORS - SAFETY, TXM 92-1260	MAKE & TYPE OF WHISTLE -
MANUFACTURER - PULLMAN STANDARD	MAKE & TYPE OF AIR COMPRESSOR - WABCO. P-2-P	NO. & TYPE OF WATER COOLERS -	MAKE & TYPE OF WINDOW WIPER -
ORDER NO. - 7014	MAKE & TYPE TR'K BRAKE - WABCO. UNIT	CAP'Y OF DRINKING WATER -	MAKE & TYPE CAP'Y BATT. - EXIDE 300AH @ 8 H.R.
YEAR BUILT - 1963	MAKE & TYPE OF HAND BRAKE - PEACOCK 800-LE-24	CAP'Y OF WASH WATER TANK -	NUMBER OF JUMPER RECEP'T. - 12 @ 16 DUMMY
MIN. RAD. OF CURVE SINGLE CAR - 240 FT	MAKE & TYPE OF COUPLER - ASF. H.T.C. STL. INTERLOCKING	NO. OF TOILETS - 0	MAKE & TYPE OF LINE SW. - WEST 5PB-53
MIN. RAD. OF CURVE CAR COUPLED - 240 FT	MAKE & TYPE OF SASH - A4W *CG, DOUBLE SLATED	MAKE & TYPE OF HOPPER -	MAKE & TYPE OF DOOR CONT'L - VAPOR, ELEC. STRIP
TYPE OF TRUCKS - CAST STEEL BAR TYPE	OUTSIDE FINISH - HIGH STRENGTH STEEL	MAKE & TYPE OF M.G. SET - WEST YX-503-A	MAKE & TYPE OF CONT'L GROUP - WEST XG-849-D
WEIGHT OF MOTOR TRUCK COMPLETE -	TYPE THICKNESS OF INSUL'TION - ULTRALITE - 25TH	MAKE & TYPE OF H. ALTERNATOR - SAFETY ELS 22-334-24 24	
WEIGHT OF TRAILER TRUCK COMPLETE -	MAKE & TYPE OF SEATS - HEYWOOD WAREFIELD	MAKE & TYPE OF U.C. POWER PLANT -	
MAKE, TYPE & SIZE OF BEARINGS - 52 X 10	SLT COVERING - VINYL PLASTIC	FUEL TANK CAP'Y -	
TYPE OF MOTORS -	MAKE & TYPE OF WINDOW SHADE -		



~ GENERAL DATA ~

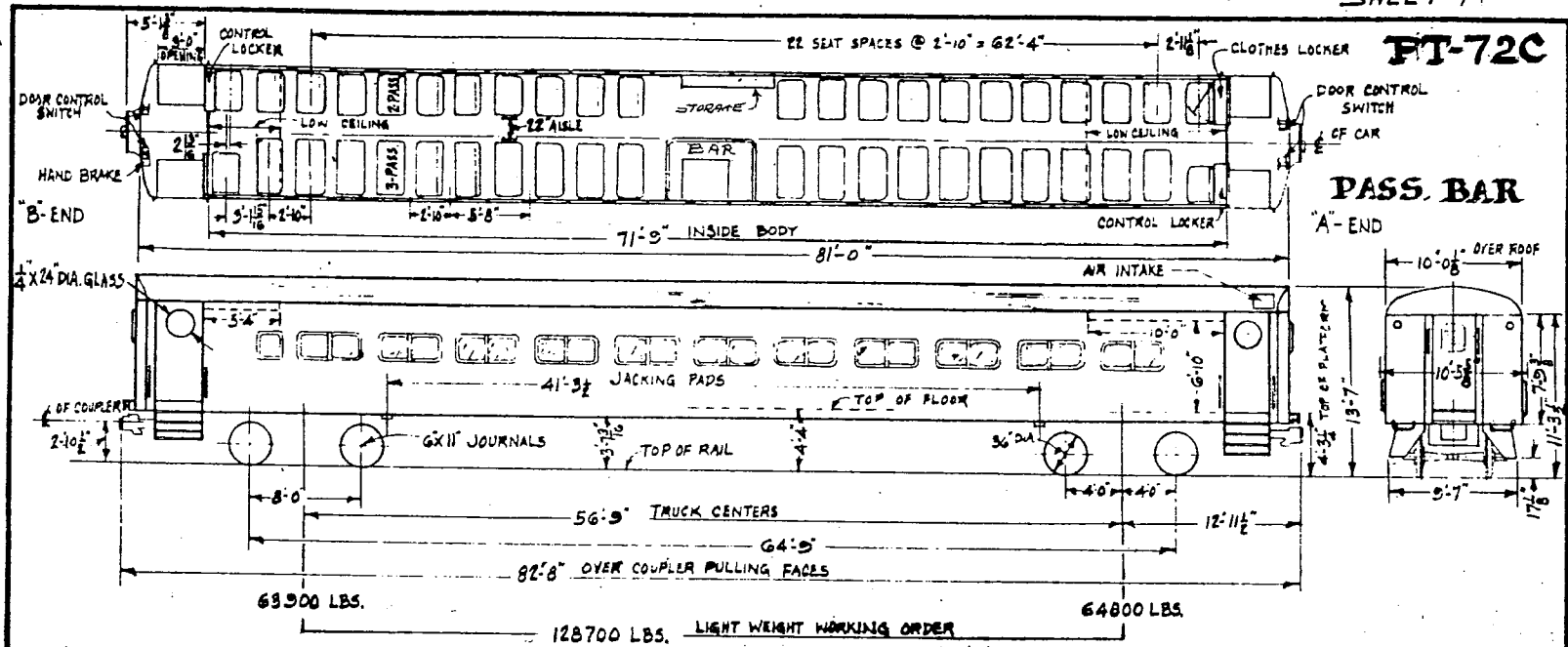
TYPE OF CAR - PUSH-PULL	MAKE & TYPE COPY BAT-EXINE, 11 CELL 500A 9 HR	MAKE & TYPE OF AIR COND. EQUIP. - FRIGORE, ELEC. MECH. & TON	NOTE: CAR NOS. 2792, 2794, 2796
CLASS OF CAR - PT-72 C	NO. JUMPER RECEIPT - 1, 4, 12, 27	MAKE & TYPE OF HEATING EQUIP. - RAILWAY UTILITY STRIP T.	2796
TYPE OF CONSTRUCTION - WELDED	MAKE & TYPE BUS LINE DIS. SW. - GE 17JM9A1	MAKE & TYPE CONT. GROUP TYPE - 17H-51351	2846 TO 2898 EVEN NOS.
CAR NUMBERS - (SEE NOTE)	NO. & SIZE OF BRAKE CYL. PER TRUCK - 2 CYS 10X3	MAKE & TYPE OF LIGHT FIXTURES - SAFETY CEILING FLUO.	CAR NOS 2890, 2892 & 2894
SEATING CAPY - 123	MAKE & SCHEDULE OF AIR BRAKES - WES. AB D22 TDR	NO. & TYPE OF VENTILATORS	ARE CAR NOS - SEE PAGE 14
MANUFACTURER - PULLMAN STANDARD	MAKE & TYPE DOOR CONT. - NAT. PNEU. C. D. C.	NO. & TYPE OF WATER COOLERS - NONE	
ORDER NO - 6963, 6974	MAKE & TYPE TRK BRAKE - A S.P. SIMPLEX CLASP	CAPY. OF DRINKING WATER - NONE	
YEAR BUILT - 1955, 1956	MAKE & TYPE OF HAND BRAKE - PEA CO. 1800 LB. CAPY.	CAPY. OF WASH WATER TANK - NONE	
MIN. RAD. OF CURVE SINGLE CAR - 240'	MAKE & TYPE OF COUPLER - AMER. STI. FBY. MOPPY T.	NO. OF TOILETS - ODD NOS. 1 EVEN NOS. NONE	
MIN. RAD. OF CURVE CAR COUPLED	MAKE & TYPE OF SASH - HUNTER CO. STATIONARY	MAKE & TYPE LINE SW. - GE 17JM9A1	
TYPE OF TRUCKS - CR EQUALIZER BAR TYPE	OUTSIDE FINISH - HIGH STRENGTH L.W. ALLOY STEEL		
CONVERTED TO PUSH-PULL 1975	TYPE & THICKNESS OF INSUL'TN - FIBERGLASS W/IMPACT SLIP DR.		
WEIGHT OF TRAILER TRUCK COMPLETE -	MAKE & TYPE OF SEATS - HAYWOOD - STATIONARY		
MAKE TYPE & SIZE OF BEARINGS - HYATT ROLLER 6X11	SEAT COVERING - VINYL		



GENERAL DATA

TYPE OF CAR - PUSH PULL	MAKE & TYPE OF AIR COND. EQUIP - FRIG'DRE ELEC MECH. HT.	MAKE & TYPE OF MASTER CONT'L - NONE
CLASS OF CAR - PT-72 A	MAKE & TYPE OF HEATING EQUIP - RAILWAY UTILITY STRUC.	MAKE & TYPE OF S.C. EQUIP - NONE
TYPE OF CONSTRUCTION - WELDED	MAKE & TYPE OF LIGHT FIXTURES - SAFETY, CEILING FLUO.	MAKE & TYPE OF HEADLIGHT - NONE
CAR NUMBERS - 2801 - 2844	NO. & TYPE OF VENTILATORS	MAKE & TYPE OF MARKER LIGHTS - NONE
SEATING CAPY - 118 A 123 (SEE NOTE)	NO. & TYPE OF WATER COOLERS - NONE	MAKE & TYPE OF WHISTLE - NONE
MANUFACTURER - PULLMAN STANDARD	CAPY. OF DRINKING WATER - NONE	MAKE & TYPE OF WINDOW WIPER - NONE
ORDER NO - 6906, 6975	CAPY. OF WASH WATER TANK - NONE	MAKE & TYPE CAPY. DATE EXPIRE 16 CELL 320 A 8 HR.
YEAR BUILT - 1953	NO. OF TOILETS - 1	NUMBER OF JUMPER RECEPT - 12
MIN. RAD. OF CURVE SINGLE CAR - 240	MAKE & TYPE TOILET - WALTON CHEMICAL	MAKE & TYPE BUS LINE DIS SW GE 17GM15A1
MIN. RAD. OF CURVE CAR COUPLED	MAKE & TYPE OF M.G. SET - GE - 56 MG 165A1	MAKE & TYPE LINE SW - GE - 17 - M 0A1
TYPE OF TRUCKS & EQUALIZER BAR TYPE	MAKE & TYPE OF M. ALTERNATOR - GE	MAKE & TYPE M. DWR. CONT'L - NAT'L ENER. REC.
WEIGHT OF MOTOR TRUCK COMPLETE	MAKE & TYPE OF U.C. POWER PLANT - NONE	
WEIGHT OF TRAILER TRUCK COMPLETE (17,600 LBS)	FULL TANK CAPY. - NONE	
MAKE & TYPE & SIZE OF BEARING - HYATT, ROLLER, 5 1/2 X 10		
NO. & TYPE OF MOTORS - NONE		
NO. & SIZE OF BRAKE CYLS PER TRK - 2 CYLS		
MAKE & SCHEDULE OF AIR BRAKES - WEST A B D22-TDE		
MAKE & TYPE OF AIR COMPRESSOR - NONE		
MAKE & TYPE TRK BRAKE - A.F. SIMPLEX CLASP		
MAKE & TYPE OF HAND BRAKE - PEACOCK, 1300E, LEVER T		
MAKE & TYPE OF COUPLER - AMR ST'L FBY MADDY ?		
OUTSIDE FINISH - HIGH STRENGTH LOW ALLOY STEEL		
TYPE & THICKNESS OF INSULATION - FIBERGLASS UTRALITE 1 1/2 IN		
MAKE & TYPE OF SEATS - HEYWOOD-WAKEFIELD STATIONARY		
SEAT COVERING - VINYL		

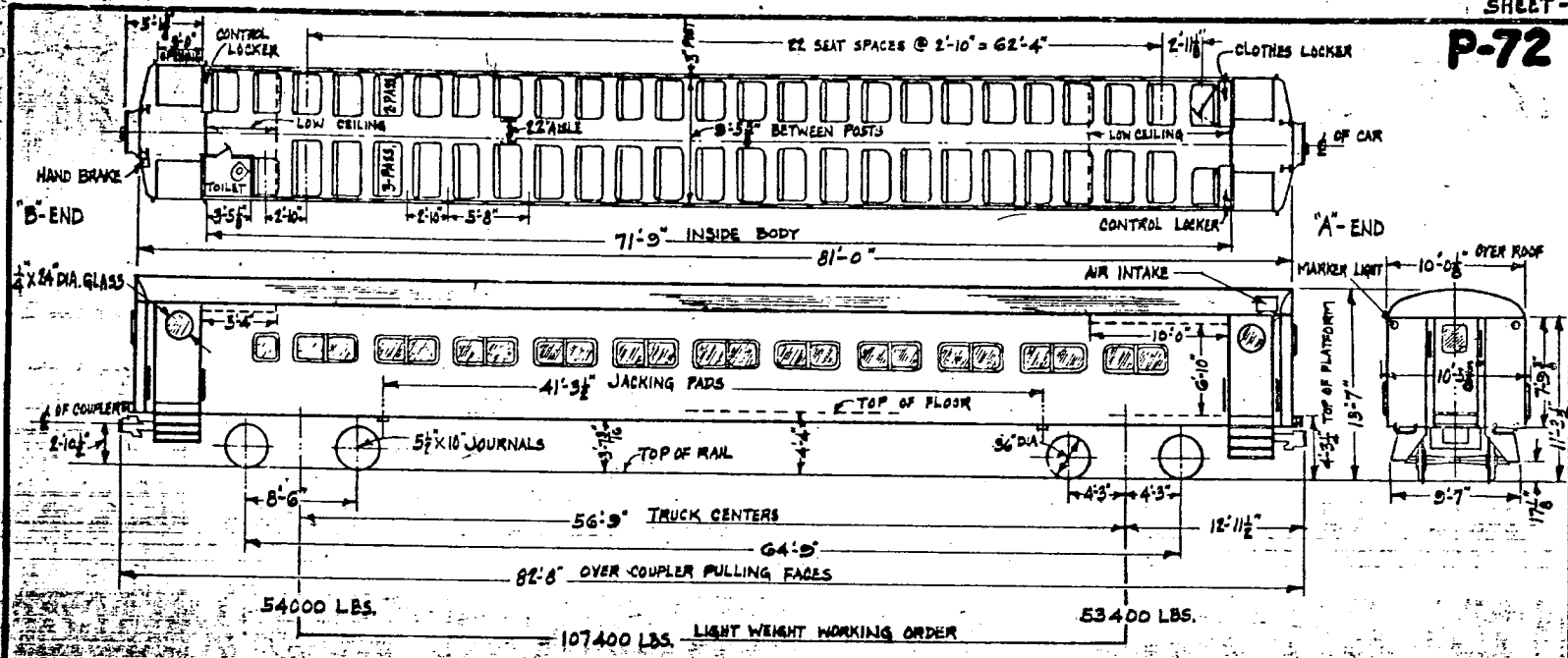
NOTE CARS WITH TOILETS - 2801
 2805, 2807, 2813, 2815, 2819
 2821, 2823, 2827, 2829, 2831
 2833, 2837, 2839, 2841, 2843



~ GENERAL DATA ~

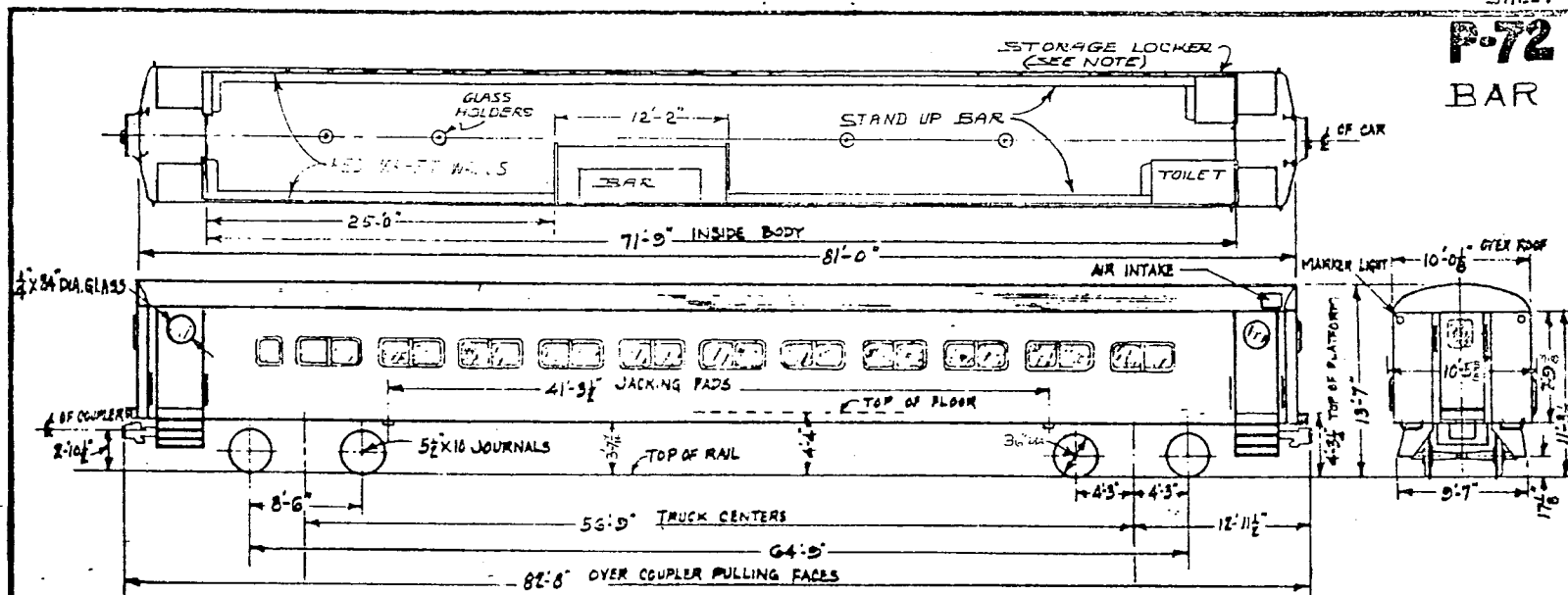
TYPE OF CAR - PASSENGER BAR		MAKE & TYPE OF AIR COND. EQUIP - FRIADRE, ELECT. MECH. B. TON	
CLASS OF CAR - FT-72C		MAKE & TYPE OF HEATING EQUIP - RAILWAY UTILITY, STRIP T.	
TYPE OF CONSTRUCTION - WELDED			
CAR NUMBERS - 2890, 2892, 2894	N° & SIZE OF BRAKE CYLS. PER TRUCK - 2 CYLS 10 X 8"	MAKE & TYPE OF LIGHT FIXTURES - SAFETY CEILING FLOOD	MAKE & TYPE OF MARKER LIGHTS - 4
SEATING CAPY - 15	MAKE & SCHEDULE OF AIR BRAKES - WEST. AB D22 TDE	N° & TYPE OF VENTILATORS	
MANUFACTURER - PULLMAN STANDARD		N° & TYPE OF WATER COOLERS - NONE	
ORDER N° - 6963, 6974	MAKE & TYPE TRK BRAKE - ASE SIMPLEX CLASP	CAPY. OF DRINKING WATER - NONE	MAKE & TYPE CAPY BATT - EXIDE 16 CELL 300A BHR
YEAR BUILT - 1953, 1956	MAKE & TYPE OF HAND BRAKE - PEA COOK 1800 LB. CAPY	CAPY. OF WASH WATER TANK - NONE	NUMBER OF JUMPER RECEPT - 12
MIN. RAD. OF CURVE SINGLE CAR - 240'	MAKE & TYPE OF COUPLER - AMER. STL. FDT. MOD. FT. B"	N° OF TOILETS - NONE	MAKE & TYPE BUS LINE DIS. SW. GE. ITGM 19A1
MIN. RAD. OF CURVE CAR COUPLED	MAKE & TYPE OF SASH - HUNTER CO. STATIONARY		MAKE & TYPE LINE SW - GE. 17JM 9A1
TYPE OF TRUCKS - CS. EQUALIZER BAR TYPE	OUTSIDE FINISH - HIGH STRENGTH LOW ALLOY STEEL		MAKE & TYPE OF DOOR CONT'L - NAT'L. PHENOLIC BC
WEIGHT OF TRAILER TRUCK COMPLETE -	TYPE & THICKNESS OF INSULTN - FIBERGLASS W/ WAT. 2 1/2" ON	MAKE & TYPE OF MG SET - GE. 56M6105A1	* No. OF SEATS
MAKE TYPE & SIZE OF BEARINGS - WAT. MILLER 6X11	MAKE & TYPE OF SEATS - HEYWOOD STATIONARY		CAR No.
	SEAT COVERING - VINYL		83
			69
			98
			2890
			2892
			2894

P-72



~ GENERAL DATA ~

TYPE OF CAR - LOCO. HAULED		MAKE & TYPE OF AIR COND. EQUIP. - FRIG'D RE. ELEC. MECH. 8-TON	
CLASS OF CAR - P-72		MAKE & TYPE OF HEATING EQUIP. - ELECTRIC	
TYPE OF CONSTRUCTION - WELDED		MAKE & TYPE OF AIR & HTG. EQUIP.	
CAR NUMBERS - 2901-2980 (SEE NOTE)	NO. & SIZE OF BRAKE CYLS PER TRUCK - 8CYL 8"	MAKE & TYPE OF LIGHT FIXTURES - SAFETY, CEILING FLOOR	MAKE & TYPE OF MARKER LIGHTS - PYLE NAT'L. INC.
SEATING CAPY. - 120	MAKE & SCHEDULE OF AIR BRAKES - WEST. A.B. D.E. - TDE	NO. & TYPE OF VENTILATORS - 1 EXHAUST, 2 INTAKE	
MANUFACTURER - POLLMAN STANDARD	MAKE & TYPE OF HAND BRAKE - A.S.F. SIMPLEX, CLASP	NO. & TYPE OF WATER COOLERS - 1 AJAX CON. W/667MA	
ORDER NO. - 6961, 6973	MAKE & TYPE OF COUPLER - AMER. STL. F.D.Y. MOD'Y. 'F'	CAPACITY OF DRINKING WATER TANK -	MAKE & TYPE CAPY. BATT. - KW, TYPE WAXD. 172A. BHR
YEAR BUILT - 1955, 1956	MAKE & TYPE OF SASH - HUNTER CO. STATIONARY	NO. OF TOILETS - 1 (ODD NO. CARS)	NO. OF JUMPER RECEPY. - 2
MIN. RAD. OF CURVE SINGLE CAR - 240'	OUTSIDE FINISH - HIGH STRENGTH, LOW ALLOY STEEL	MAKE & TYPE OF LAVATORY - MICROPHOR	NOTE -
MIN. RAD. OF CURVE CAR COUPLED -	TYPE & THICKNESS OF INSULTN. - FIBERGLASS, UTRALITE 3LSDN	MAKE & TYPE OF HOPPER -	SEE PAGE 11 FOR THE FOLLOWING CARS:
TYPE OF TRUCKS - C.S. EQUALIZER BAR TYPE	MAKE & TYPE OF SEATS - HAYWOOD W/4 HLD. REVERSIBLE TYP		CAR NO.'S 2905 - 4 2970.
WEIGHT OF TRUCK COMPLETE -	SEATING COVERING - WYANSOTE GREEN	MAKE & TYPE OF U.C. POWER PLANT - GM MODEL 80860	WERE CONVERTED TO BAR
MAKE, TYPE & SIZE OF BEARINGS - HYATT ROLLER 1 1/2 X 10'	MAKE & TYPE OF WINDOW SHADE - ADAM & WEST. CABLE TYPE	FUEL TANK CAPY. - 150 GAL.	CARS, WITH ELECTRIC HEAT 1975
			2990 WAS 2970 2991 WAS 2905
			2992 WAS 2957



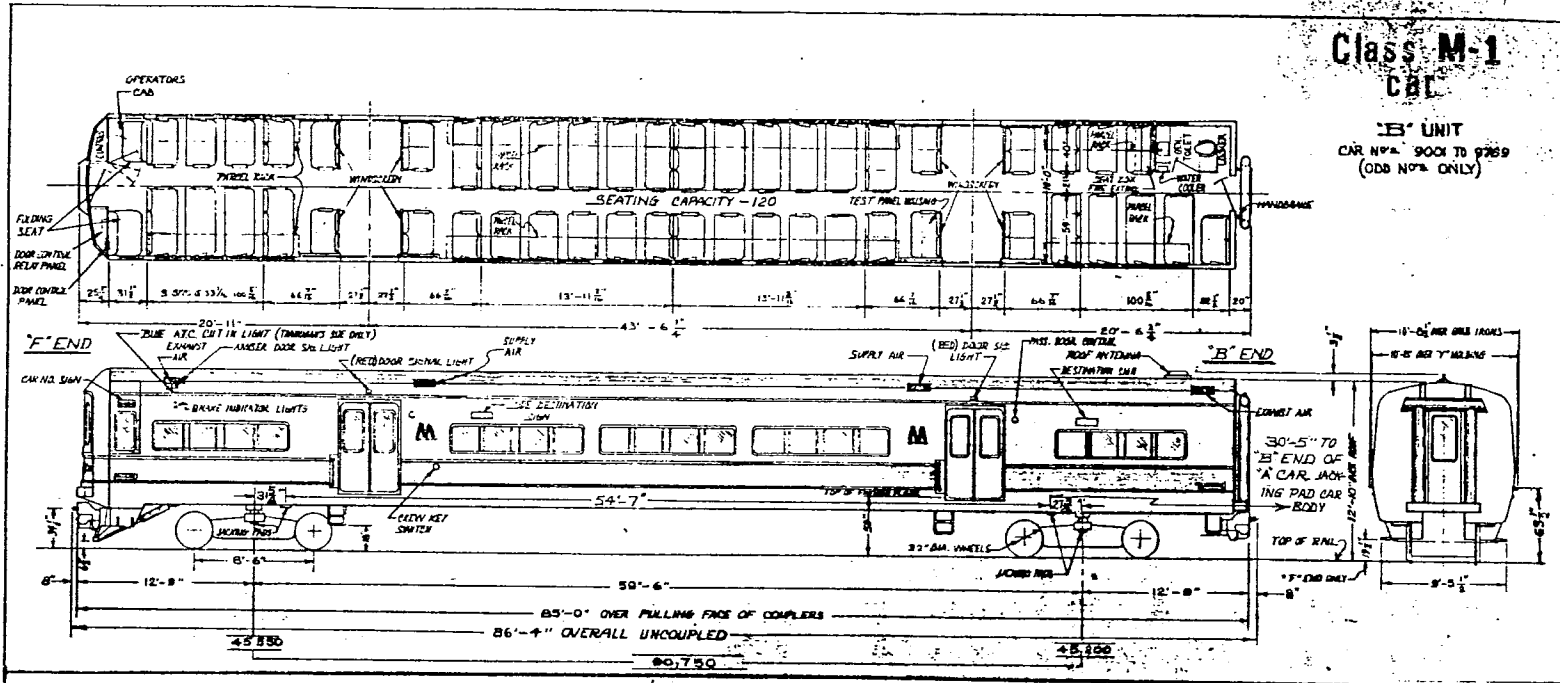
NOTE:
THE TOILET & LOCKER ARRANGEMENT
IS REVERSED ON CAR NO. 2990.
CAR NO. 2991 SHOWN

~ GENERAL DATA ~

TYPE OF CAR - BAR CAR	INSIDE FINISH - RED CARPET WALLS	MAKE & TYPE OF AIR COND. EQUIP. - FRIG'DRE ELEC. MEN & TON	
CLASS OF CAR - P-72	AND FLOOR	MAKE & TYPE OF HEATING EQUIP. - ELECTRIC	
TYPE OF CONSTRUCTION - WELDED			
CAR NUMBERS - 2990, 2991, 2992	NO. & SIZE OF BRAKE CYLS PER TRUCK - 2 CYS	MAKE & TYPE OF LIGHT FIXTURES - SAFETY, CEILING, FLOOR	MAKE & TYPE OF MARKER LIGHTS - PYLE NATL. INC.
SEATING CAP'Y - NO SEATS	MAKE & SCHEDULE OF AIR BRAKES - WEST. A.B. DEE-TDE	NO. & TYPE OF VENTILATORS - 1 EXHAUST, 2 INTAKE	
MANUFACTURER - PULLMAN - STANDARD			
ORDER NO. - G961, G973	MAKE & TYPE TANK BRAKE - A.S.F. SIMPLEX, CLASP	CAPACITY OF DRINKING WATER TANK -	MAKE & TYPE CAP'Y. BATT. - KW. TYPE HAXO 172A. BAR
YEAR REBUILT - 1975	MAKE & TYPE OF HAND BRAKE - PEA COCK 1; 800L LAYER TP.	CAPACITY OF WASH WATER TANK - 60 GAL'S.	NO. OF JUMPER RECEPY. - 2
MIN. RAD. OF CURVE SINGLE CAR - 240'	MAKE & TYPE OF COUPLER - AMER. STL. FDY MOD'Y "F"	NO. OF TOILETS - 1 (MICROPHOR)	
MIN. RAD. OF CURVE CAR COUPLED -	MAKE & TYPE OF SASH - HUNTER CO. STATIONARY		
TYPE OF TRUCKS - C.S. EQUALIZER BAR TYPE	OUTSIDE FINISH - HIGH STRENGTH LOW ALLOY STEEL		
WEIGHT OF TRUCK COMPLETE -	TYPE & THICKNESS OF INSULTN. - FIBERGLASS, UTRALITE SLDRN		
	MAKE & TYPE OF SEATS - NONE		OLD CAR No. NEW No.
MAKE, TYPE & SIZE OF BEARINGS - HYATT, ROLLER, 5 1/2 X 10		MAKE & TYPE OF U.C. POWER PLANT - GM. MODEL 80060	2970 2990
	MAKE & TYPE OF WINDOW SHADE - NONE	FUEL TANK CAPY. - 150 GAL'S.	2905 2991
			2957 2992

Class M-1
CAR

'B' UNIT
CAR NO'S 9001 TO 9269
(ODD NO'S ONLY)

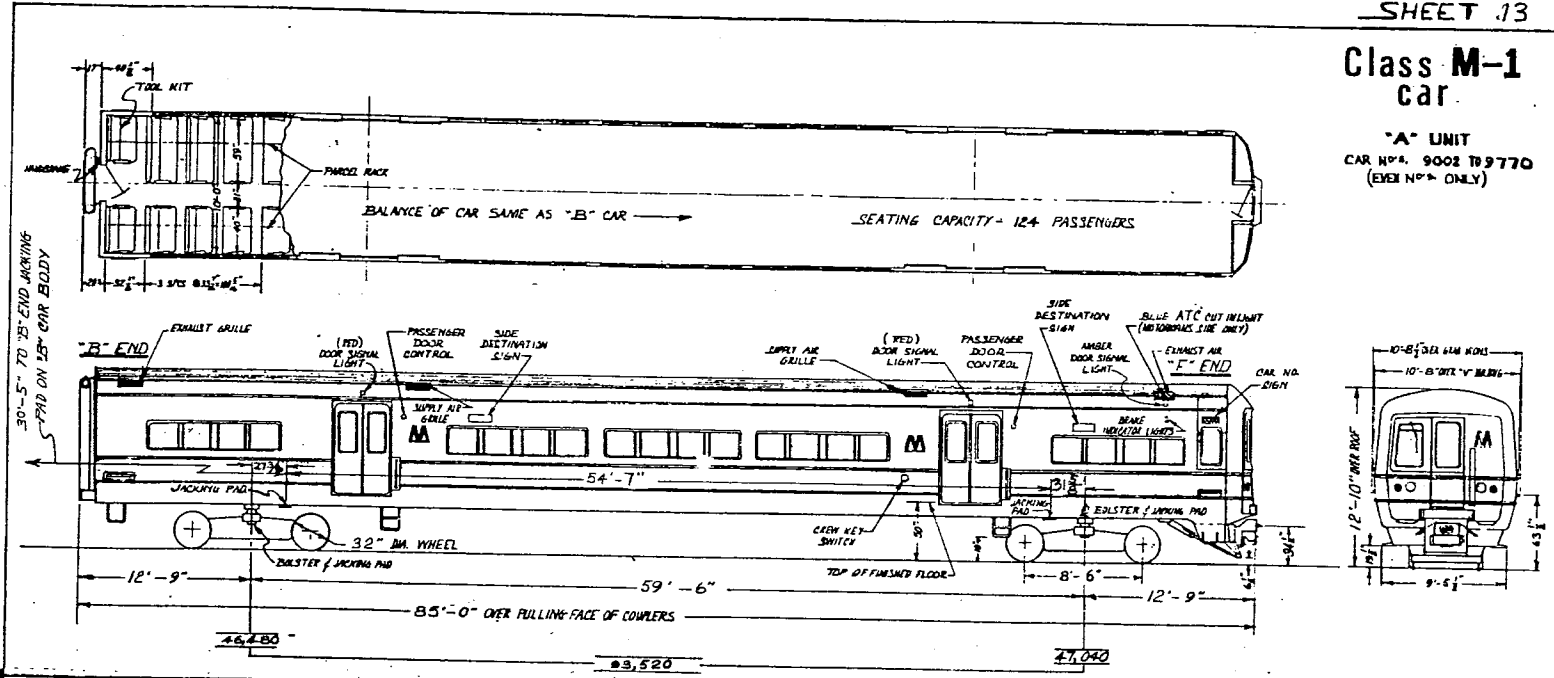


DATA

GENERAL		DATA	
TYPE OF CAR - Married Pair	MASTER CONTROLLER - GE 17KC104	AIR COND. - Trane 14 Ton, elec/wash.	SASH - O.M. Edwards & Trans. Sash
MANUFACTURER - Budd Co. & G.E.	MOTORS -	BRAKE SCHEDULE - WABCO RT5-A	SEATS - Gen. Seating, fixed, contoured
ORDER NO. - MTA 930 & 930A	No. & Make: 4 GE1255A2	BRAKE SHOE - WABCO Cobra 12 1/2" V174S	SUSPENSION - Coil springs in series with WABCO C-1 leveling valves to Control Firestone No. 218
YEAR BUILT - 1968, '69, '70, '71, '72	Voltage: 325/650 Volts D.C.	BRAKE UNITS - WABCO GJ54, 4 per truck	Air Bellows
ELECTRICAL		CONSTRUCTION - Welded Stainless Steel with Fiberglass Cab End	TOILET - Koehler 1-114995 Aircraft Type Chemical
AIR CONDITIONING CONTROLS - Vapor	Continuous H.P.: 160 H.P. each	COUPLER - WABCO N2A Automatic	TRUCK CLASS - P111
ATO/ATC - GE RG262D	Wt. 1 motor complete: 1,347 lbs.	FLOORING - Rubber Tile	TRUCK WEIGHT - 14,500 lbs.
BLDS - GE GM19	P.A. SYSTEM - Midwest Audio #304	GEAR UNIT - GE GA56 Double Reduction 4.19:1 Ratio, Wt. 884 lbs.	VENTILATORS - Trane 4522
CAB SIGNAL - WABCO Type EL	RADIO - Motorola T43DEW130	SIDE WINDOWS - SINGLE GLAZED, 460" THICK TINTED POLYCARBONATE	WINDOW WIPER - Sprague Air Wiper w/GF170 mtr, 110 volts, A.C.
CONTACT SHOES - 2 per truck	A/W SP3	HANDBRAKE - Peacock 800 LG (CER)	DROP SASH - Lexan Single Glazed
CONTROL GROUP - GE 17K0261	RECEPTACLE TRANSF. - GE41A261434P1	HORN - Leslie Type 41 Single Tone	
DESTINATION SIGNS -	110 Volts, 1 Ph. 60 cy. 2KVA output	ODOMETER - Engler Hubometer	
DOOR CONTROL - Vapor Corp.	SPEEDOMETER - GE A702JS	RAD. OF CURVE - 240 ft. min. (marked)	
HEADLIGHTS - Trans-Lite FP-1754-1	TRAIN IDENT. SYSTEM - WABCO		
HEAT CONTROL - Vapor Corp.	TRAINLINE - Jumper Cables (B End)		
LIGHT FIXTURES - Luminato Fluor.	WABCO Auto. FL-138 portion (F End)		
MARKER LIGHTS - Trans-Lite FP-1755-1	WHEEL SLIP CONTROL - GE 17FL5481		
	MECHANICAL		
	AIR COMP. - WABCO D3 220VAC, 42 CFM		

**Class M-1
car**

"A" UNIT
CAR NO. 9002 T9770
(EVEN NO. ONLY)



GENERAL		DATA	
TYPE OF CAR - Married pair	LIGHT FIXTURES-Luminator Fluor.	SPEEDOMETER-GE A702JS	
MANUFACTURER - Budd Co. & G.E.Co.	MARKER LIGHTS-Trans-Lite FP1755-1	TRAIN IDENT.SYSTEM - WABCO	
ORDER NO. - MTA 930 & 930A	MASTER CONTROLLER - GE17KC104	TRAINLINE-Jumper Cables ("B" End)	HANDBRAKE - Peacock 800 LG (CEB)
YEAR BUILT - '68, '69, '70, '71, '72	MOTORS-	WABCO Auto.FL-138 Portion("P" End)	HORN - Leslie Type 44 single tone
ELECTRICAL	No. & Make: 4 GE1255A2	WHEEL SLIP CONTROL - GE17FL54B1	ODOMETER - Enqler Hubometer
AIR COND. CONTROL - Vapor Corp.	Voltage: 325/650 volts D.C.	MECHANICAL	RAD. OF CURVE-240 ft. Min(married)
BATTERY - Edison,Nickel Iron,	Continuous HP: 160 HP each	AIR COND. - Trane 14 ton elec/mech	SASH-O.M. Edwards - Tran. Sash
B-10-H 25 cells, 32VDC,187 AH.	Wt. 1 mtr. complete: 1,347 lbs.	BRAKE SCHEDULE - WABCO RT5-A	SEATS-Gen. Seating, Fixed,contour
BATTERY CHARGE RECT.-GE41A254636P4	MOTOR ALTERNATOR-	BRAKE SHOE-WABCO Cobra 12k V174S	SUSPENSION-Coil springs in series
BATTERY CHARGE TRANS-GE41B555578P1	Type: GE GMG-2-559	BRAKE UNITS-WABCO GJ54,4 per truck	W/WABCO C-1 leveling valves to
BLDS - GE GMG19	Voltage Input: 650 volts D.C.	CONSTRUCTION - Welded stainless,	Control Firestone #218 air bellow
CONTACT SHOES - 2 per truck	Voltage Output: 220 volts A.C.	fibreglass cab end	TRUCK CLASS - P111
CONTROL GROUP - GE 17KG261	60 cy, 3 Ph, 70 KW	COUPLER - WABCO N2A automatic	TRUCK WEIGHT - 14,500 lbs.
DESTINATION SIGNS -	PA SYSTEM-Midwest Audio Model 304	FLOORING - Wool carpet	VENTILATORS - Trane 4522
DOOR CONTROL - Vapor Corp.	RADIO-Motorola T-43DEW1130 A/W SP3	GEAR UNIT-GE GA56 Double Reduction	WINDOW WIPER-Sprague Air Wiper
HEADLIGHTS - Trans-Lite FP-1754-1	RECEPTACLE TRANSP-GE 41A261434PL	4.19:1 ratio, Weight 884 lbs.	W/GF170 motor 110 volts, A.C.
HEAT CONTROL - Vapor Corp.	110V, 1 Ph, 60 Cy, 2 KVA output	SIDE WINDOW-SINGLE GLAZED, 460"	DROP SASH - Lexan Single Glazed
		THICK TINTED POLYCARBONATE	