



**Inventory of    
 COMMUTER PARKING   
  at L.I.R.R. Stations   
 .   
 Nassau & Suffolk Counties   
 .**

QUEENS - LONG ISLAND  
MASS TRANSPORTATION DEMONSTRATION PROGRAM

1965

**Committee For Better Transit**  
BETTER TRANSIT - BETTER COMMUNITIES  
P. O. Box 3106 Long Island City 3, N. Y.

QUEENS-LONG ISLAND MASS TRANSPORTATION DEMONSTRATION PROGRAM  
REPORT OF TECHNICAL COMMITTEE - JANUARY, 1966

POLICY COMMITTEE

City of New York . . . . . John V. Lindsay, Mayor  
Chairman ex officio

Timothy W. Costello, Deputy Mayor-  
City Administrator  
Chairman

William F. R. Ballard, Chairman,  
New York City Planning Commission

Borough of Queens . . . . . Mario J. Cariello, President

N. Y. C. Transit Authority . . . . . Joseph E. O'Grady, Chairman

Nassau County . . . . . Eugene H. Nickerson, County Executive

Suffolk County . . . . . H. Lee Dennison, County Executive\*

Tri-State Transportation Commission . . . . William J. Ronan, Chairman

Long Island Rail Road . . . . . Thomas Goodfellow, President

TECHNICAL COMMITTEE

City of New York . . . . . Thomas R. Croghan, Office of the  
City Administrator  
Chairman

Joseph McC. Leiper, Director,  
Transportation Planning, New York  
City Planning Commission

Borough of Queens . . . . . Allen O. Brown, Planning Engineer

N. Y. C. Transit Authority . . . . . William Lassow, Assistant to Chairman

Nassau County . . . . . Charles E. Stonier, Executive  
Secretary

Suffolk County . . . . . Clement J. Gaertner, Jr.\*

Tri-State Transportation Commission . . . . George Haikalis, Research Engineer

Long Island Rail Road . . . . . Kenneth S. Niemond, Research Engineer

\* \* \*

Nathan D. Brodtkin, Chief Engineer, N. Y. C. Transit Authority, Technical Advisor

Milton Friedman, Office of the City Administrator, Secretary

\* \* \*

Project Staff . . . . . Seymour Kashin, Director  
Albert J. Syvertsen  
Marvin L. Landsman

\*Observer

ACKNOWLEDGEMENT

The preparation of this report was financed in part through financial assistance from the Housing and Home Finance Agency under provisions of Section 103 (b) of the Housing Act of 1949, as amended by Section 303 of the Housing Act of 1961.

Robert C. Weaver, Secretary  
Department of Housing and Urban Development

John C. Kohl, Director of Transportation  
Department of Housing and Urban Development

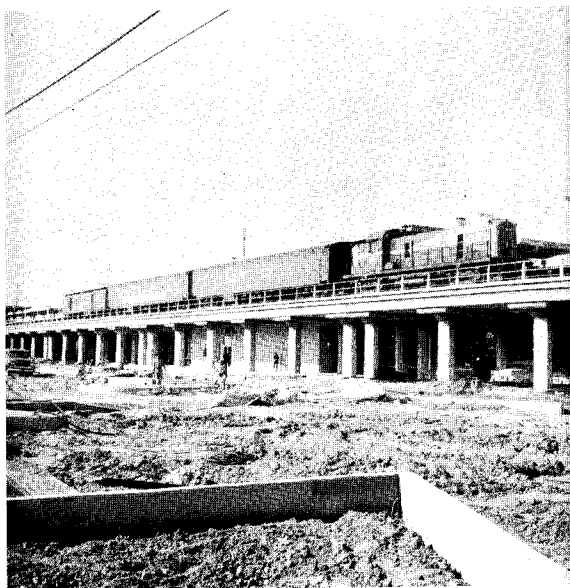
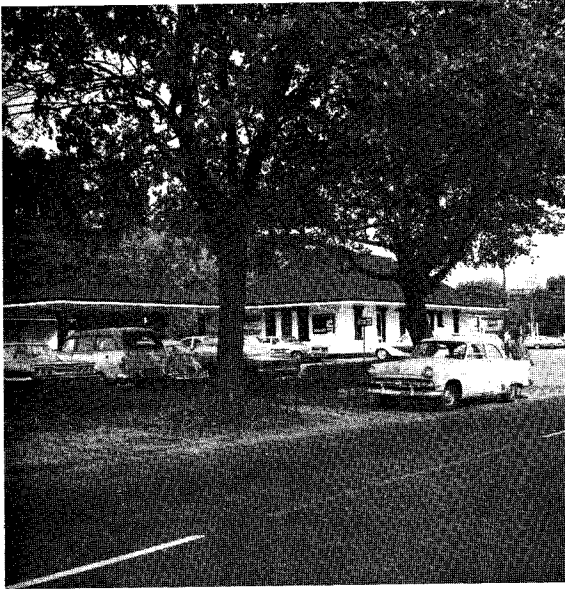
## INTRODUCTION

The inventory of parking facilities on the Long Island Rail Road within Nassau and Suffolk Counties was undertaken by the Project staff to provide data to be used by Program, its consultants or other agencies in:

1. Studies to determine the impact of parking facilities on Long Island Rail Road usage;
2. Studies concerned with possible diversions of commuter traffic (inter-modal as well as intramodal);
3. Explorations of the possible institution of park-and-ride demonstration project or projects.

The work contained in this report was accomplished with the cooperation of the cities, towns and villages along the Long Island Rail Road as well as the cooperation of the railroad itself.

The information contained in this report is arranged by County and Town and by railroad branch. No information is included for railroad stations in eastern Suffolk County, beyond the limit of railroad commutation train service.



The commuter parking facilities along the Long Island Rail Road vary by type and size as well as by management and ownership. In the more remote locations where parking demand has not outstripped the generally limited railroad right-of-way we find free parking on railroad property; this situation changes in steps through inexpensive town-controlled use of streets to the large town-owned parking lots with fee parking controlled through the use of permits and meters. It should also be noted that the parking situation is not a static one, it is constantly changing and in the right direction with improvements and expansion being the rule where change is taking place. Specifically, the present grade crossing elimination work on the Montauk Division through Wantagh, Seaford and Massapequa will provide improved station and parking facilities as a byproduct of this reconstruction. Also, the Urban Renewal Project at Huntington on the Port Jefferson Branch includes provision for improved commuter parking facilities.

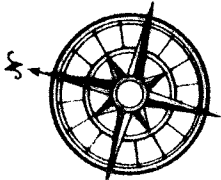
KEY TO ABBREVIATIONS USED

MD	Montauk Division*
ML	Main Line <sup>†</sup>
PJB	Port Jefferson Branch
HB	Hempstead Branch
PWB	Port Washington Branch
FRB	Far Rockaway Branch
OBB	Oyster Bay Branch
LBB	Long Beach Branch
WHB	West Hempstead Branch
CB	Central Branch
Unk.	Unknown

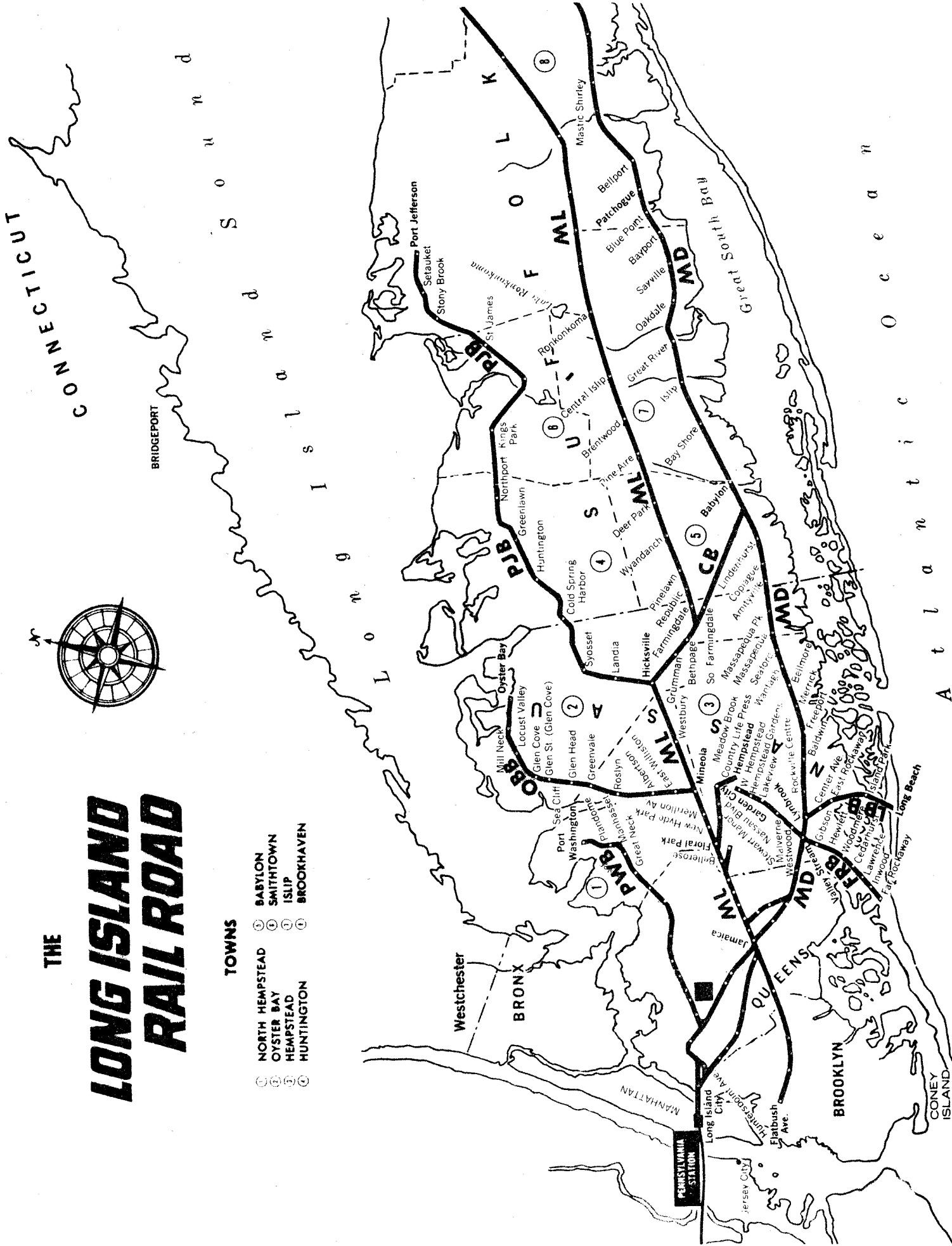
\*Stations east of Mastic-Shirley not included in this survey.

<sup>†</sup>Stations east of Ronkonkoma not included in this survey.

# THE LONG ISLAND RAILROAD



- TOWNS**
- ① NORTH HEMPSTEAD
  - ② OYSTER BAY
  - ③ HEMPSTEAD
  - ④ HUNTINGTON
  - ⑤ BABYLON
  - ⑥ SMITHTOWN
  - ⑦ ISLIP
  - ⑧ BROOKHAVEN



RAILROAD COMMUTER PARKING BY COUNTY AND TOWN

Nassau County

Town of Hempstead	14,063
Town of North Hempstead	3,089
Town of Oyster Bay	<u>4,944</u>
	22,096

Suffolk County

Town of Babylon	3,166
Town of Brookhaven	1,710
Town of Huntington	2,307
Town of Islip	1,738
Town of Smithtown	<u>839</u>
	9,760*

TWO COUNTY TOTAL

31,856

\*Does not include Long Island Rail Road Stations in eastern Suffolk County, beyond the limit of railroad commuter train service.



TOWN OF HEMPSTEAD

<u>Station</u>	<u>Amount of Parking</u>	<u>Portion of Railroad</u>
Baldwin	925	MD
Bellmore	1025	MD
Bellerose	36	ML
Cedarhurst	198	FRB
Center Avenue	113	LBB
Country Life Press	403	HB
East Rockaway	126	LBB
Floral Park	286	ML
Freeport	1250	MD
Garden City	210	HB
Gibson	180	FRB
Hempstead	541	HB
Hempstead Gardens	0	WHB
Hewlett	460	FRB
Inwood	97	FRB
Island Park	269	LBB
Lake View	35	WHB
Lawrence	150	FRB
Long Beach	350	LBB
Lynbrook	1199	MD
Malverne	209	WHB
Merrick	950	MD
Merillon Avenue	96	ML
Nassau Boulevard	195	HB
New Hyde Park	450	ML
Oceanside	400	LBB
Rockville Centre	1130	MD
Seaford	575	MD
Stewart Manor	159	HB
Valley Stream	671	MD
Wantagh	900	MD
West Hempstead	60	WHB
Westwood	95	WHB
Woodmere	320	FRB
	14,063	

TOWN OF NORTH HEMPSTEAD

<u>Station</u>	<u>Amount of Parking</u>	<u>Portion of Railroad</u>
Albertson	80	OBB
Carle Place	50	ML
East Williston	194	OBB
Great Neck	364	PWB
Greenvale	156	OBB
Manhasset	537	PWB
Mineola	466	ML
Plandome	75	PWB
Port Washington	520	PWB
Roslyn	50	OBB
Westbury	<u>597</u>	ML
	3,089	

TOWN OF OYSTER BAY

<u>Station</u>	<u>Amount of Parking</u>	<u>Portion of Railroad</u>
Bethpage	533	ML
Farmingdale	200	ML
Glen Cove	103	OBB
Glen Head	193	OBB
Glen Street	125	OBB
Grumman	0	ML
Hicksville	1,383	ML
Landia	0	PJB
Locust Valley	217	OBB
Massapequa	848	MD
Massapequa Park	526	MD
Mill Neck	40	OBB
Oyster Bay	81	OBB
Sea Cliff	103	OBB
South Farmingdale	Neg.	CB
Syosset	<u>592</u>	PJB
	4,944	

TOWN OF BABYLON

<u>Station</u>	<u>Amount of Parking</u>	<u>Portion of Railroad</u>
Amityville	461	MD
Babylon	1334	MD
Copiague	310	MD
Deer Park	205	ML
Lindenhurst	476	MD
Pinelawn	20	ML
Republic	0	ML
Wyandanch	<u>360</u>	ML
	3,166	

TOWN OF BROOKHAVEN

<u>Station</u>	<u>Amount of Parking</u>	<u>Portion of Railroad</u>
Bellport	50	MD
Blue Point	50	MD
Mastic-Shirley	72	MD
Patchogue	353	MD
Port Jefferson	155	PJB
Ronkonkoma	830	ML
Setauket	50	PJB
Stony Brook	<u>150</u>	PJB
	1,710	

TOWN OF HUNTINGTON

<u>Station</u>	<u>Amount of Parking</u>	<u>Portion of Railroad</u>
Cold Spring Harbor	345	PJB
Greenlawn	322	PJB
Huntington	947	PJB
Northport	<u>693</u>	PJB
	2,307	

TOWN OF ISLIP

<u>Station</u>	<u>Amount of Parking</u>	<u>Portion of Railroad</u>
Bayport	62	MD
Bay Shore	413	MD
Brentwood	300	ML
Central Islip	105	ML
Great River	50	MD
Islip	404	MD
Oakdale	114	MD
Pine Aire	126	ML
Sayville	<u>164</u>	MD
	1,738	

TOWN OF SMITHTOWN

<u>Station</u>	<u>Amount of Parking</u>	<u>Portion of Railroad</u>
Kings Park	150	PJB
Smithtown	394	PJB
St. James	<u>295</u>	PJB
	839	



PARKING BY BRANCH AND STATION  
ON THE LONG ISLAND RAIL ROAD

SUMMARY BY BRANCH:

Montauk Division	14,312
Main Line	6,043
Port Jefferson Branch	4,093
Hempstead Branch	1,508
Port Washington Branch	1,496
Far Rockaway Branch	1,405
Oyster Bay Branch	1,342
Long Beach Branch	1,258
West Hempstead Branch	399
Central Branch	<u>0</u>
	31,856