

**EVOLUTION OF
LONG ISLAND RAIL ROAD BUTTONS AND LAPEL INSIGNIA**

Compiled and Researched by David Keller

“Staff” button – c. 1850s – c. 1870s

Gold: all positions



Larger buttons for coats and smaller for sleeves and vests (possibly caps as well).

(Scan courtesy of "Yard Goat")

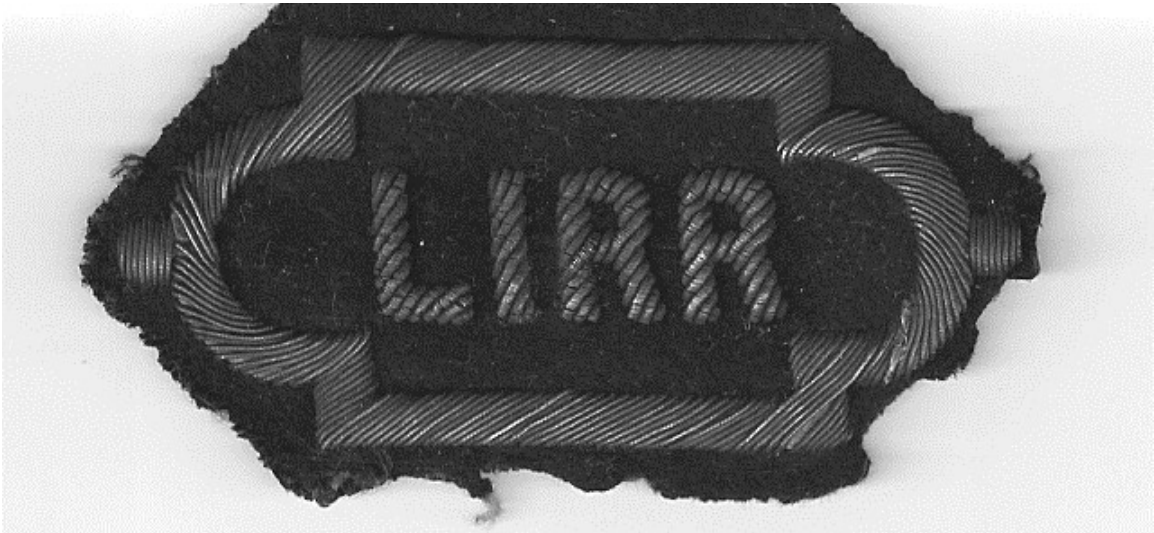


c. 1870s – 1900

Gold: Conductor

Silver: All other positions

Worn in a double-breasted pattern of 5 & 5 on the black, frock-style uniform coat. 2 smaller buttons on sleeves, small buttons on vest and sides of cap. *(Dave Keller archive)*



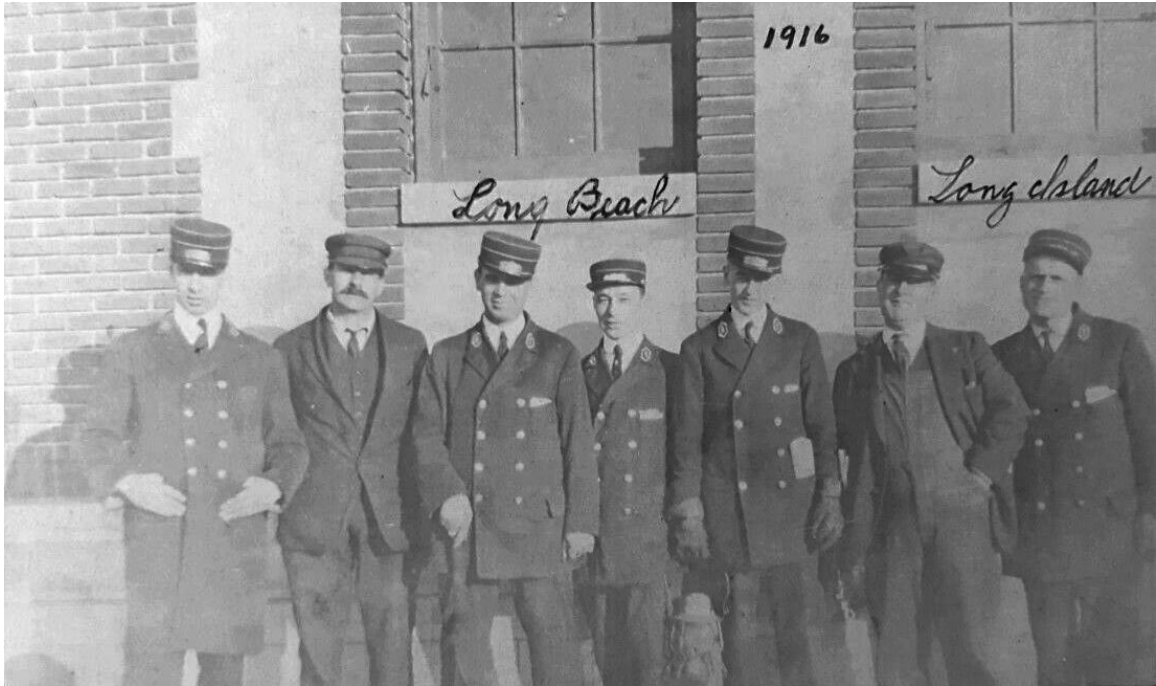
TRAINMAN, CONDUCTOR AND LIRR POLICE c. 1916 +

Gold: Sergeant and higher ranks

Silver: Patrolmen

Not sure if trainmen and conductors wore different toned metal thread.

Metallic embroidered insignia on black, worn on lapels of train crews and on collars of LIRR police dept. uniform tunics. *(Both scans courtesy of "Yard Goat")*



1916 Train Crew at Long Beach station (eBay scan)

Close-up:





T. J. HEVERIN, 2nd Vice-President
Brooklyn, N. Y.

1918-1919

(Scan courtesy of "Yard Goat")



c. 1880 - c. 1908

Cloth embroidered lapel insignia - "LIRR" in block letters - worn vertically on lapels of the black uniform coat. *(Trainmen in old L. I. City Trainmen's room: Dave Keller archive)*

Lapel insignia ("collar brass") for LIRR Police Officers:
(dates used: c. 1950)



(Dave Keller archive)



PREVIOUS PAGE: c. 1908 Conductor Frank Erthal *(Dave Keller archive)*

Black frock coat, double pattern of 5 buttons, "semaphore"-style, metallic embroidered lapel insignia with sideways embroidered "LIRR" and white summer uniform cap.

(Special dress uniform when Conductor Erthal worked President Theodore Roosevelt's trains to and from Oyster Bay.) *(Dave Keller archive)*





"Semaphore"-style metallic embroidered lapel insignia with sideways embroidered "LIRR" *(Dave Keller archive)*



1900 – c. 1915 (Pennsylvania Railroad Style, reflecting their ownership)

Gold: Conductor

Silver: All other positions

Worn in a double-breasted pattern of 5 & 5 on the black, frock-style uniform coat. Smaller buttons on sleeves, vest and sides of cap.

Lapel insignia: "Semaphore"-style embroidered border surrounding sideways embroidered "LIRR"



c. 1915 - c. 1932

Cloth embroidered lapel insignia - "LIRR" in block letters - worn vertically on lapels of the uniform coat, similar to 1880s style



c. 1915 – c. 1932 *(Dave Keller archive)*

Gold: Conductor

Silver: All other positions

Worn in a double-breasted pattern of 4 & 4 on the blue uniform coat. 2 smaller buttons on sleeves. Small buttons on vest and sides of cap.

Lapel insignia: Sideways embroidered “LIRR” (no border)



c. 1932 – 12/1949 PRR keystone reflecting ownership

Gold: Conductor / Silver: All other positions *(Dave Keller archive)*



Worn in a double-breasted pattern of 3 & 3 or single-breasted pattern of 3 on the black uniform coat. 2 smaller buttons on sleeves. Small buttons on vest and sides of cap. *(Dave Keller archive)*

Lapel insignia:



c. 1932 – 10/1949: Embroidered interlocked “LIRR” inside PRR keystone. Gold metallic thread: Conductor / Silver metallic thread: Trainman, both on black background. *(LIRR train crew at Hempstead: Dave Keller archive)*

Lapel Insignia:

10/1949 – 2/1953: Metal pin with “LI” initials in circle:

Gold tone: Conductor and Trainman (?) *(Dave Keller archive)*



12/1949 – 1959 *(Dave Keller archive)*

Gold: all positions

Worn in a single-breasted pattern of 3 on the blue serge uniform coat. 2 smaller buttons on sleeves. Small buttons on vest and sides of cap.

Lapel Insignia:

2/1953 – June-Sept/1959: Metal pin with “LI” initials (no circle): Gold tone: Conductor /nickel tone: Trainman.



(Dave Keller archive)



1959 – 1972 *(Dave Keller archive)*

Silver: all positions

Worn in a single-breasted pattern of 3 on the gray uniform coat. Smaller buttons on vest. No buttons on sleeves or cap.

Lapel insignia:

6-9/1959 – 1972: Same style as indicated above (metal pin with “LI” initials and no circle): Silver

1972 - 1/1/89

Same “LI” logo button as above (1959-1972):

Gold: Conductor / Silver: Trainman

Worn in a single-breasted pattern of 3 on the MTA blue uniform coat. Smaller buttons on vest. No buttons on sleeves or cap.

Lapel insignia: None

Pocket insignia: Worn above uniform coat breast pocket:





1972 – c. 1979 *(Dave Keller archive)*

Silver: all positions

Worn on MTA uniform overcoats only. Logo-style buttons not used on replacement overcoats issued c. 1979. *(Robert Myers info.)*



(Dave Keller archive)

1/1/89 – Present

Gold: all positions

Worn in a single-breasted pattern of 2 on the MTA blue uniform coat. Smaller buttons on vest. No buttons on sleeves or cap. No logo on overcoat buttons.

Lapel insignia: None

Pocket insignia: embroidered above jacket breast pocket

